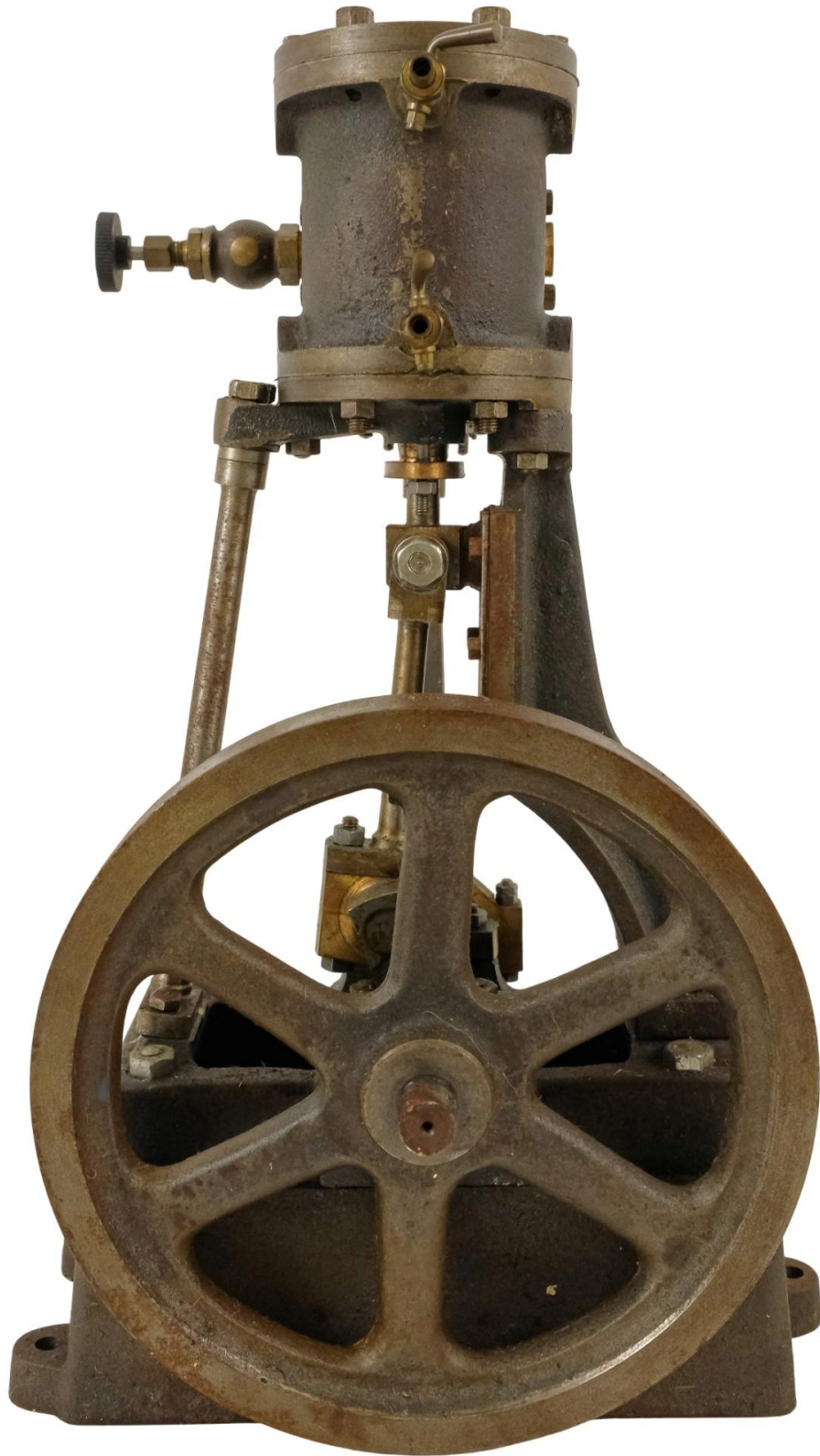


# LODGE & THOMAS

THE TRURO SALEROOM



**Friday 17<sup>th</sup> October – 10 am**

**Antiques - Fine Art - Jewellery - Collectables**

# ORDER OF LOTS

	<b>Page No.</b>
CONDITIONS OF SALE .....	i
METALS AND MISCELLANEOUS – Lots 1 to 123.....	1
MODEL STEAM ENGINES AND ENGINEERING – Lots 170 to 200.....	5
CERAMICS AND GLASS – Lots 201 to 292 .....	6
ORIENTAL – Lots 301 to 337 .....	9
COINS, BANKNOTES, STAMPS AND POSTCARDS – Lots 351 to 368 .....	10
FASHION – Lots 391 to 423.....	11
MILITARIA – Lots 466 to 480.....	12
BOOKS – Lots 481 to 500.....	12
TOYS AND DOLLS – Lots 501 to 514.....	13
SILVER – Lots 531 to 564 .....	14
SILVER PLATE – Lots 601 to 606.....	15
JEWELLERY – Lots 621 to 671 .....	15
WATCHES – Lots 701 to 712 .....	16
PICTURES – Lots 729 to 860.....	17
RUGS – Lots 861 to 871 .....	29
CLOCKS – Lots 881 to 884.....	29
FURNITURE – Lots 901 to 943.....	29

# CATALOGUE

of the 1-DAY ONLINE sale of

## ANTIQUES, FINE ART, JEWELLERY & COLLECTABLES

on behalf of

**Executors & Private Vendors**

at

**Truro Sale Room, Newquay Road, Truro, Cornwall TR1 1RH**

on

**Friday 17<sup>th</sup> October 2025 at 10am**

### **CONDITIONS OF SALE**

1. Commission at the rate of 18% plus VAT will be charged to purchasers on each item.
2. None of the Lots are subject to VAT.
3. **Payment Terms** - Payment by cash or debit card only. Credit cards not accepted.
4. All goods to be paid for on the sale day and no goods may be removed until a receipted account has been obtained from the sale office.
5. All lots are the responsibility of the purchaser from the fall of the hammer.
6. This catalogue is prepared for the benefit only of purchasers and no guarantee is given or implied in respect of any lot. Purchasers are deemed to have satisfied themselves as to the quantity, quality and description of each lot before bidding.
7. Prospective buyers of coloured gemstones should be aware that some stones may have been treated to enhance their colour or clarity. Prospective buyers must satisfy themselves as to the nature of the gems and gold purity so described.
8. Weights and measurements are approximate guidelines only.
9. All items are to be removed on the day of sale unless other arrangements are made with the Auctioneers.
10. Other conditions of sale as displayed and announced at the time of sale.
11. Live bidding internet surcharge 4.95% plus VAT applicable for online purchases, on behalf of ATG Media for this service.
12. A.R.R. Artist's Resale Right will apply to any work which achieves a hammer price of £1,000, applicable to living artists and artists who have died in the last 70 years.  
[gov.uk/guidance/artists/resale/right](http://gov.uk/guidance/artists/resale/right)

**LOT DESCRIPTION****METALS AND MISCELLANEOUS – Lots 1 to 123**

- |   |  |
|---|--|
| <p>1 A late 19th century Troughton &amp; Simms sextant - retailed by John Dennett Potter (1810-1882), brass with black finish and ebony handle, the mahogany case containing additional lenses. £400-600</p> <p>2 A Seidel &amp; Naumann 'Bijou' portable typewriter - fitted in a distressed fitted leather case. £40-60</p> <p>3 A rare HMV laminated panelled mahogany gramophone horn - early 20th century, with original circular 'His Masters Voice' transfer, the metal end tip stamped 'PAT'D SEPT.1904 - MARCH.1905, OTHERS PEND'G', together with an early HMV mahogany cased gramophone and a quantity of 78rpm records. £200-300</p> <p>4 A Victorian Betjemann patent coromandel book slide - with two hinged ends mounted with gilt brass gothic style panels, inset with two Pietra Dura oval roundels, with a central plaque engraved 'Valentine - Dundee' and the two outer gilt brass plaques engraved 'self closing book slide' and 'Betjemann's patent', 40 x 18 x 19cm. £80-120</p> <p>5 An Edwardian brass hall lantern - in the Art Deco style and comprising four clear glass bevelled panels engraved with a star decoration, 78cm high. £80-120</p> <p>6 An ordnance map of Scotland - Sheet 53, Ben Nevis, Loch Linnhe, framed and glazed, 56 x 68cm. £10-20</p> <p>7 A Tridacna gigas giant clam - two half shells of a similar size, 31cm wide, together with a collection of various corals. £140-180</p> <p>8 A framed needlework study - The Rose Revived, dated 1936, framed and glazed, overall size 64 x 48cm. £5-10</p> <p>9 A 19th century cartridge re-loading tool - together with a 19th century brass cartridge capping tool, another later similar tool, tow charge measures, a treen tamping tool, a vintage Eley percussion cap tin and another later tin. (8) £120-180</p> <p>10 A magnum champagne display bottle - for Louis Roederer, together with five similar standard bottles, on an associated wooden crate. (7) £20-40</p> <p>11 A brass ships light - Starboard, of quadrant form, 22cm high, together with a convex mirror. (2) £20-40</p> <p>12 An 20th century cold painted bronze model of a dog - 4cm high. £20-40</p> <p>13 A carved hardwood Yoruba figure - of female form, together with three further African hardwood figures. £30-50</p> | <p>14 A pair of reconstituted stone dogs - modelled as recumbent mastiffs, 30cm wide. (2) £70-100</p> <p>15 An early 20th century single draw telescope - nickel plated and leather clad, objective lens 1 1/4". £20-40</p> <p>16 An Art Deco style plastic dressing table set - comprising four items, two tone marbled pink, boxed, together with a purple marbled manicure set. £30-50</p> <p>17 An Oxfordshire Constabulary blue serge police cape - with lion mask chain and whistle, together with a Thames Valley police helmet, two police truncheons, a black leather belt and a Police Association shoulder patch. (5) £30-50</p> <p>18 A Scottish hardstone plaid brooch - modelled in the form of a flintlock gun, 8cm long, together with another smaller and a horn handled Sgian Dubh. £20-40</p> <p>19 A large boat hook - with brass fittings on a mahogany shaft with string bindings. £30-50</p> <p>20 A wooden desk top model of a Spitfire Mk1 - together with a wooden desk top model of a Jagpanther tank and two cast metal aircraft. (4) £40-60</p> <p>21 A late 19th century violin - back 37cm, with a label 'The Maidstone Murdoch Murdoch &amp; Co. London', together with a hard mahogany case. £40-60</p> <p>22 A pair of early 20th century War Department field glasses - ownership initials to one barrel, in a tan leather case, together with another pair of field glasses, P Atkin &amp; Son, Cowes IoW. (2) £30-50</p> <p>23 A late 19th century concertina by Wheatstone &amp; Co. - numbered 32298, with foliate pierced sound boards, ebonised frame and black leather bellows, with velvet lined leather case. £30-50</p> <p>24 NO LOT</p> <p>25 An early 20th century Ariel Motorcycles nutcracker - cast iron, circa 1929, modelled as a horse, 18cm wide. £100-150</p> <p>26 A pair of terracotta garden urns - of circular form with twin handles and moulded with swags, 38cm diameter. (2) £40-60</p> <p>27 A vintage style mannequin torso - of female form, upholstered in calico with integrated articulated head and stained wooden arms, raised on a post with cruciform wheeled base, 166cm high, together with a similar female torso with turned terminal at neck and a similar male torso. £70-100</p> |
|---|--|

- 28 A mid 20th century Cornwall constabulary black serge uniform jacket - collar number of 58 with chrome buttons and WWII medal ribbons above left breast pocket, chest size 42.5", together with helmet, size 71/8. (2) £50-80
- 29 A quantity of masonic ephemera - including jewels, badges, apron, gloves and associated items. £20-40
- 30 A late 19th century turned boxwood dice shaker - together with a set of drafts pieces and a small turned gavel. £20-40
- 31 A late Victorian tan leather musical photograph album - the boards with gilt foliate strapwork enclosing decorative polychrome printed pages and a Swiss musical movement, together with a reference book related to musical boxes. (2) £40-60
- 32 A pair of early 20th century beech boot lasts - with plunger type action. £30-50
- 33 A large ceramic pestle and mortar - together with a chicken brick, a comic cheese dish, a fish kettle, a glass butter dish and sundry items. (qty) £30-50
- 34 A pair of stereoscopic viewers - early 20th century. (2) £20-40
- 35 A small quantity of metalware - including a brass tray, a teapot and sundry. (qty) £30-50
- 36 A World War II Air Ministry P-type compass - with carriage box bearing service stamps for 1942 and 1943, together with a Walker's patent 'Excelsior III' log, boxed, circa 1936. (2) £80-120
- 37 A late 19th century plaster figure of archangel Gabriel - polychrome painted, standing above the devil, 80cm high, together with two similar figures of the Holy Mother and child and a priest. (3) £50-80
- 38 A late 19th century violin bow - fitted with mother-of-pearl and an ivory adjusting knop, 73cm long, ivory licence no. ZCWPNEA3, together with two further violin bows. (3) £40-60
- 39 Christopher Saxton West Riding of Yorkshire - coloured engraving, 35 x 40cm, together with another similar North Riding, 22 x 38cm. (2) £30-50
- 40 A framed set of W D & H O Wills cigarette cards - Association Footballers circa 1935, framed and glazed on both sides, 61 x 69cm, together with another similar set and a John Players caricatures set circa 1927. (3) £30-50
- 41 An early 20th century violin - with a two piece back and paper label to interior. £40-60
- 42 Six cricketing lithographs signed by past players of Gloucestershire Cricket Club - together with six Gloucestershire cricket club place mats. £20-30
- 43 A large brass blow torch - 37cm high. £80-120
- 44 A Wimshurst machine or electrostatic generator - on an ebonised base, together with ancillary items, in a box. £30-50
- 45 A desk top model ship - The Rose, commissioned as a fruit carrier in 1938 for Anders Jahre, Sandefjord, sale 32'-1", within a glass case and carriage case. £50-80
- 46 A vintage Esso petrol can - with associated brass lid, together with another similar. (2) £20-40
- 47 A custom made Shell advertising pump - with the distinctive clam top above a clear reservoir and tapering branded tube and circular wooden base, 107cm high. £100-200
- 48 In the manner of Franz Bergman cold painted bronzes - a matched pair of figures below a palm tree, one male seated, the other a woman collecting water, 19cm high. (2) £150-200
- 49 NO LOT
- 50 Michael Johnson Newlyn Copper Works, a copper boat 'NEWLY PZ36' - the model of a fishing trawler on a bronze wave scroll stand, impressed maker's stamp to the tiller, height 29cm. £1500-1800
- 51 A vintage travel trunk by H Cave & Sons - rectangular blue oil cloth covering with aluminium corners, 75 x 38 x 36cm. £10-15
- 52 A 19th 'Grand Tour' white marble lion - recumbent and raised on a rectangular grey marble base, 17cm. £120-180
- 53 A 17th century style executioner's axe - with hickory handle. £40-60
- 54 A Dunhill chrome 'Sabre' jet table lighter - circa 1950, raised on a circular plinth base, 16cm long. £120-180
- 55 An Art Deco gilt spelter table lamp - modelled with a lunging female dancer supporting a marbled glass ball and raised on a black marble base, 30cm wide. £200-300
- 56 After Josef Lorenzl (Austrian 1892-1950) a pair of dancing bronze figures - with ivory heads and raised on tapering faceted onyx bases, bases stamped 'Lorenzl Made in Austria Real Bronze', 33cm high. (2) Ivory exemption certificate 8QEEV8UM. £400-600
- 57 After Demetre Chiparus, an Art Deco dancing figure - cast spelter with bronzed finish and resin head, raised on a red and black marble base, 32cm high. £40-60

- 58 An Art Deco style bronze figure - modelled as a dancing odalisque with arms outstretched, raised on a marble and tiled rectangular base, 47cm wide. £800-1200
- 59 A cast aluminium desk top ornament - modelled as a four engine flying boat in a climbing pose, raised on a tear shaped base, 27cm high. £40-60
- 60 A vintage brass desk lamp - the conical shade on a curved support with an oval base incorporating a toggle switch, 47cm high. £30-50
- 61 A vintage table lamp modelled from a Kodascope projector - with a dished shade. £80-120
- 62 An Edwardian rectangular oak tray - with a silver plated gallery and fittings, 64cm wide, together with a floor standing ashtray/smokers compendium. (2) £20-40
- 63 An early 20th century bronze and onyx ashtray - modelled with a lion drinking from the dished onyx tray, 18cm wide. £30-50
- 64 An Austrian cold cast bronze and onyx ashtray - the circular dished tray supported on fox heads, 16cm diameter. £30-50
- 65 An early 20th century brass trench art ashtray - modelled from a 9cm shell case dated 1933, 11cm high. £20-40
- 66 An Art Deco style Dunhill pocket lighter - silver plate with an engine turned body, boxed, together with a Dunhill novelty table lighter in the form of a lidded tankard and a 'Silent Flame' table lighter, Bakelite with a chrome figure holding a peacock fan and another similar figure lacking base. (4) £80-120
- 67 A vintage compressed fibre travelling case - with brass fittings, reinforced corners and ownership initials, 47cm wide. £20-40
- 68 A vintage Japanese tinplate robot - in the style of 'Robbie the Robot', finished in gloss black and red, 23cm high, together with another similar. £30-50
- 69 A Japanese carved hardwood bear - sharing a salmon with a cub, character marks to base, 30cm high, together with another similar of a bear holding a salmon. (2) £30-50
- 70 A pair of early 20th century shoe lasts - stained beech with brass and metal fittings, size 7.5. £20-30
- 71 An Akua'ba fertility doll - the figure with a bead ear pendant, 23cm high, together with two further Ashanti dolls. (3) £20-40
- 72 A Mullard valve - AZ31, boxed with original wrapping. £10-20
- 73 A cerise glass table lamp - of ribbed, cylindrical form, height 26cm. £20-40
- 74 An 18th century polychrome painted Madonna and Child - the pine figure with gesso and painted finish, under an associated glass dome, figure 19cm high. £40-80
- 75 A contemporary terracotta sculptural figure - in a seated pose clutching her legs, 24cm high, together with another similar. (2) £20-30
- 76 A Pantone magazine rack 14-0848 (Mimosa) - the finished rectangular steel panel folded to form a pocket, 51cm high. £40-60
- 77 Adrien Gardere (b. 1972) for Artemide, a pair of table lamps - with tilting cream shades on bronzed bases, 49cm high. (2) £50-80
- 78 An early 20th century white damask napkin - by repute from the King of Greece, with embroidered decoration showing dandies dining at a stone bench, framed, label verso detailing provenance, 62 x 60cm. £20-40
- 79 A Touring Map of The Cornish Riviera - circa 1935, the lithograph showing Cornwall and major transport routes and roads, the periphery with local retailer advertising, 66 x 83cm. £40-60
- 80 A vintage acrylic table lamp by Flemming Brylle and Preben Jacobsen - the white hooped shade in clear supports. £80-120
- 81 A contemporary cylindrical papier mache vase - painted with a continual design showing a harbour, St Michael's Mount and mermaids, 30cm. £10-20
- 82 A Persian papier mache and decorated scribes box - decorated with figures on a hunt, 20cm wide. £20-40
- 83 An early 20th century lacquer tray - of oval form and decorated with gilt flowers, 28cm wide. £20-30
- 84 A copper and white metal scroll case - decorated with coloured cabochon stones and characters, 27cm long. £20-40
- 85 A serpentine door stop - of drop form with a brass ring handle, 30cm high. £250-300
- 86 Seven Beatles vinyl LP's - including Help, Revolver and Please Please Me, together with a small quantity of sundry late 60's and 70's records. £80-120
- 87 A quantity of 45rpm vinyl records - including some Beatles and many similar 1960's and 1970's records, together with a period 45rpm record stand. (qty) £60-80

- 88 An early Victorian sampler - Elizabeth Pool June 14 1847, with pious script surrounded by house and flowers, together with angels and animals, 46 x 38cm. £60-80
- 89 A Victorian sampler - Amy Ann Pigott 1840, red text and alphabet on linen, 39 x 39cm. £30-50
- 90 A vintage style Showman's sign - 'Everyone's Favorite Dodgem' polychrome painted on a ply sheet, 123 x 95cm. £100-150
- 91 A Victorian walnut writing slope - with brass binding and vacant cartouche, the interior with leather surface and inkwell, 30cm wide. £30-50
- 92 A serpentine door stop - of squat bottle form, 17cm high. £60-80
- 93 A turned oak trencher - the rim with liner decoration, 28cm diameter. £20-40
- 94 A Canon A1 SLR camera - together with two spare lenses (3) £30-50
- 95 A pair of late 19th century portrait photographs - over-painted in oil, 30cm x 25cm (2) £20-40
- 96 A 20th century Russian papier mache trinket box - of rectangular form, the hinged cover decorated with a winter scene, 9cm wide £20-40
- 97 A copper chestnut roaster - of rectangular form, the cover with a waved decoration and a wooden handle, 21cm wide £20-30
- 98 A suite of six Post Office sorting office plates - including two Launceston, Camelford, Fowey, Newquay and Liskeard (6) £30-50
- 99 A pair of Persian slippers - with Paisley pattern fabric uppers and leather soles, together with an Indian carving set (2) £20-40
- 100 An 18th century miniature portrait - the work on ivory showing a woman with bouffant wig, within a gilt metal frame, 6cm x 4cm, Ivory declaration F2ZSS882 £100-150
- 101 A St Leonard split cane rod - in two sections, with a canvas case £20-40
- 102 A mid 19th century mahogany tea caddy - of rectangular form with wooden ring handles the interior with two canisters and raised on squat bun feet, 29cm wide £20-40
- 103 A Victorian rosewood and brass bound writing slope - the hinged top with a vacant cartouche, the interior with red leather writing surface and an inkwell, 35cm wide £40-60
- 104 A Victorian mahogany writing slope - with countersunk brass handles, 41cm wide. £30-50
- 105 A Victorian walnut and gilt metal dressing case - in the gothic style, the interior fitted with glass bottles and lift out tray, 25cm wide £80-120
- 106 A 19th century mahogany writing slope - the hinged lid set with a floral vacant cartouche, 40cm wide, together with another writing slope (2) £30-50
- 107 A vintage American 'My Buddy' tackle box - aluminium incorporating two trays, 48cm wide, together with a quantity of spoon lure £30-50
- 108 An Alvey A1 side casting fishing reel - with a four and a quarter inch spool, £20-25
- 109 An Orvis CFO III fly reel - with a three inch spool and another spare spool (2) £150-200
- 110 A quantity of vintage fishing accessories - including a variety of floats, Wheatley fly tin, Shakespeare fly tin, rod plugs, gaff hook, priest, scales and weed cutter £25-30
- 111 A Daiwa match rod - 'Lightening Carbon' 13' in three pieces, with a blue cloth bag £30-40
- 112 An Adder graphite fly rod - 10' in three pieces, with a black cloth bag £25-30
- 113 A Fenwick graphite spinning rod - 7' in two pieces, with a green cloth bag and hard case £50-60
- 114 A Fenwick graphite 'Voyageur' travel rod - 8' four piece with a cloth cover and hard case £50-60
- 115 Fifty-one copies of Classic Angling magazine - issues 52-80, 82-93, 95-99 and 101-105 £20-30
- 116 HARWOOD Keith & STANLEY David, Tight Lines the Story of Abu - published Medlar 2007, limited edition 211/500, with hard covers and dust jacket £50-80
- 117 SKUPIEN Daniel, Vintage Fishing Reels of Sweden - published Schiffer 2002, with hard covers £10-20
- 118 WALLER Phil, Fishing Reels (Collecting for All) - published STR Design and Print 2002, with soft covers, together with a pack of fishing reels playing cards (2) £10-20
- 119 SANDFORD Chris, The Best of British Baits - Pollendine Printers 1997, signed to the fly leaf, hard cove and dust jacket, together with a supplement edition with soft covers and a copy 300 Years of Phantom & Devon Minnows (3) £50-80
- 120 CALABI Silvio, Collector's Guide to Antique Fishing Tackle - published Wellfleet Press 1989, hard covers and dust jacket, together with four other fishing related volumes (5) £40-60
- 121 KEWLEY Charles & FARRAR Howard, Fishing Tackle for Collectors - published Sotheby Publications 1987, together with Fishing Tackle a Collector's Guide, (2) £30-40
- 122 BINGHAM Tom, Bingham's Bakelite Centerpins - self published, together with another publications Reels (2) £20-30

- 123 A table top model of a Falmouth quay punt - with a natural finished varnished hull and brown sails, 128cm wide. £120-150

124 – 169 NO LOTS

### MODEL STEAM ENGINES AND ENGINEERING –

#### Lots 170 to 200

- 170 A large single cylinder horizontal steam engine - green painted, raised on a grey wooden plinth, 61cm. £200-300
- 170A A quantity of Stuart Turner ephemera - catalogues etc. £20-30
- 171 A large Babcock and Willcox boiler - mounted on a hardwood base, 50cm. £80-120
- 172 A mid 20th century twin cylinder vertical steam engine - with copper boiler and mounted on a wooden base, 38cm wide. £120-180
- 172A A length of presentation track bed - 5.5" gauge, the rails and sleepers on a faux ballast base raised on a mahogany plinth, 140cm long. £20-40
- 173 A large Stuart Turner twin cylinder vertical reversing steam engine - finished in natural and black, 30cm wide. £180-250
- 173A A large early 20th century horizontal steam engine - natural with a red painted flywheel on a green and black painted wooden base, 57cm. £200-300
- 174 An early 20th century horizontal steam engine - with green and red livery and raised on a wooden base, 44cm wide. £150-250
- 174A A set of casting for an American live steam locomotive - believed to be complete, for LBC Virginia 4-4-0. £60-90
- 175 A mid 20th century large horizontal steam engine - painted yellow with a spoked flywheel, 37cm wide. £150-250
- 176 A Stuart Turner horizontal engine - finished in black, 21cm wide, together with two single cylinder vertical engines. (3) £120-180
- 177 An early 20th century twin cylinder marine engine - with reversing mechanism, mounted on a wooden base, 17cm wide, together with a Stuart Turner marine engine and another with coopered cylinders. (3) £150-200
- 178 An early 20th century horizontal steam engine - possibly Stuart Turner, with a coopered cylinder and spoked flywheel, 28cm wide, together with another smaller similar. (2) £120-180
- 179 A Stuart Turner vertical cylinder engine - natural finish with a brass flywheel, 24cm high, together with a horizontal steam engine, green and red painted, on a wooden base. (2) £80-120

- 180 A Stuart Turner beam engine - with a black finish and grooved drive wheel, on a wooden base, 40cm wide. £120-180
- 181 An early 20th century vertical steam engine - possibly Stuart Turner, in green and black livery, 27cm high, together with a horizontal engine, on a shaped cast aluminium base. (2) £120-180
- 182 A horizontal steam engine - with boiler and associated equipment, mounted on a rectangular tray, 37cm wide. £80-120
- 183 A Stuart Turner static boiler - with hand pump and cylinder, mounted on a mahogany board, 54cm wide. £100-150
- 184 A Stuart Turner beam engine - with a black finish and grooved drive wheels, on a mahogany base together with carry box, 51cm wide. £180-250
- 185 A Stuart Turner horizontal mill engine - black finish, on an oak base within a glass case, 39cm wide. £120-180
- 186 A Stuart Turner horizontal static engine - natural finish with a ribbed fly wheel, 28cm wide, together with a scratch built twin cylinder horizontal engine. (2) £120-180
- 187 A vertical twin cylinder marine engine - constructed in the early 20th century, natural finish, mounted on a wooden base, 28cm wide. £50-80
- 188 A Stuart Turner 'Williamson' live steam barn engine - in natural finish, 26cm high. £80-120
- 189 A steam powered model tug - with glass fibre hull and wooden superstructure, fitted with boiler and vertical twin cylinder engine, 90cm. £100-150
- 190 A Stuart Turner model 501 steam boiler - 30cm wide, together with a Wilesca vertical steam boiler. (2) £100-150
- 191 A Bassett Lowke Babcock type boiler - in a cast iron faux brick mounting, 30cm wide. £70-100
- 192 A Stuart Turner horizontal steam engine - connected to a boiler on a naturalistic stepped base, 36cm wide. £120-180
- 193 A Stuart Turner horizontal engine - black and red detailing to frame and flywheel, connected to a boiler, mounted on a large rectangular base, 45cm wide. £80-120
- 194 A Mamod steam roller - traditional green and red colours, 22cm long, together with another two similar, two further axels and a Mamod power press and sundry small items. (qty) £70-100
- 195 An early 20th century static steam engine - the boiler stamped WJBL, mounted on a wooden base with a horizontal cylinder and flywheel, 25cm wide. £80-120

- 196 A Mamod steam lorry - in red and green livery, 43cm long, together with a traction engine, with associated parts. (2) £40-60
- 197 A Mamod static steam engine - with twin cylinders, on a red steel base, together with two vertical engines, two static engines and a steam roller. (6) £80-120
- 198 A Stuart Turner vertical reversing steam engine - the supports and flywheel painted yellow, with red counter weight, 35cm high. £120-180
- 199 A Stuart Turner vertical steam engine - the body and flywheel in natural finish, 35cm high. £150-200
- 200 A model live steam Charles Burrell traction engine - 1.5" scale, apparently complete, painted in green and black, 76cm long. £800-1200

### CERAMICS AND GLASS – Lots 201 to 292

- 201 A late 19th century terracotta milk pancheon - lidded, with glazed interior, 47cm diameter. £20-40
- 202 A 12lb Maypole Dairy Company Ltd. treacle glazed butter crock - with twin handles, transfer printed underglaze and impressed unit measurement, together with three other treacle glazed grocers jars, one marked Rice and another Peas. (4) £40-60
- 203 A 19th century 15lb treacle glazed butter crock - with twin handles and incised paterae decoration, transfer under glazed label 'The Professional & Civil Service Supply Association Ltd Edinburgh', 25cm high, together with two Maypole Dairy 2lb cups and a Lipton lidded jar. (4) £40-60
- 204 A quantity of Royal Albert Old Country Roses tea and coffee wares - including two coffee jugs, a teapot and a bachelor teapot, together with various cups, saucers, milk jugs and sundry. (qty) £120-180
- 205 An early 20th century 20lb treacle glazed butter crock - with twin handles and incised paterae decoration, incised coloured text 'Dundee Supply Company Ltd 80 Commercial Street Dundee', together with two other smaller 5lb labelled butter crocks and a mezzaluna. (4) £40-60
- 206 An early 20th century 6lb treacle glazed butter crock - with twin handles and incised paterae decoration, incised coloured lettering 'Wm. Millar's P S & C S Stores Dundee', 16cm high, together with four other glazed grocer's crocks. (5) £40-60
- 207 An early 20th century treacle glazed lidded butter crock - incised decoration, cast lion mask handles and inscribed 'Thompson & Gillespie', 16cm high, together with three other various grocers crocks. (4) £40-60
- 208 An early 20th century 12lb treacle glazed lidded butter crock - incised decoration, cast lion mask handles and inscribed Andrew Collie & Co Family Grocers & Wine Merchants 265 Union Street Aberdeen, 24cm high, together with two further grocers. (3) £40-60
- 209 A Victorian clear glass onion shaped fly trap - raised on three feet, 15cm high, together with a 19th century ceramic slab and an octagonal jar. (3) £20-40
- 210 A Peter St Clair studio glass bowl - blue with scrolled lustre decoration, etched signature to base, dated 1992, 16cm diameter. £80-120
- 211 A Peter St Clair studio glass vase - blue with scrolled lustre decoration incorporating clouded glass canes, 15cm high. £60-90
- 212 A Peter St Clair studio Bristol blue glass - of tulip form and raised on a stem, engraved to base and dated '92, 17cm high. £40-60
- 213 A 19th century Prattware pot lid - Walmer Castle, 10cm, together with five other pot lids, including Transplanting Rice and Pegwell Bay. £50-80
- 214 A 19th century Prattware pot lid - Building for the Great Exhibition 1851, 7cm diameter, together with eight other small pot lids, including Alas Poor Bruin, Volunteers and Bears at School. (8) £40-60
- 215 Six mid to late 20th century Limoges boxes - decorated with figures and floral groups. (6) £30-50
- 216 A Pilkington Royal Lancastrian vase - with a mottled orange vermilion glaze, impressed mark to base, 12cm high. £30-50
- 217 Bengt Edenfalk for Skruf Glass - an olive colour glass bottle vase with applied spun clear glass ribbed body, signed to base, 24cm high. £40-60
- 218 Four Royal Worcester style napkin rings - decorated with fruit on a mossy bank, signed with initials. (4) £20-30
- 219 An 18th century clear cordial glass - the bell shaped bowl engraved with a floral and foliate band, on a multi strand stem, 15cm high. £40-60
- 220 An 18th century armorial tea cup - of ribbed form, the handle with vine terminals, 6cm high, together with two further cups and another tea bowl. (4) £40-60

- 221 A pair of 18th century Royal Crown Derby tea bowls - decorated in enamels depicting flowers and a bridge, together with another small pair. £30-50
- 222 A late 18th century Meissen tea cup and associated saucer - decorated with flowers and insects, together with a tea bowl and another tea cup. (4) £60-90
- 223 A St Ives Pottery piggin - with a celadon glazed interior, with incised pottery mark and stamped England, the rim with a pouring spout, 15cm wide, together with a Le Dieu Pottery glazed mug. (2) £20-40
- 224 Roby of Paris ceramic inkwell - modelled as a Pierrot figure, iridescent green, 13cm high. £20-40
- 225 LOT WITHDRAWN
- 226 A 20th century British pottery casserole - of shallow form and with twin handles, decorated with abstract patterns on a vibrant blue ground, inscribed 'Willo' to base, 29cm diameter. £30-50
- 227 Hugh West (British b. 1950) creel type pot with cover - glazed in greens and blues with an impressed seal mark below one handle, 12cm high. £30-50
- 228 A Crown Devon Art Deco style dinner service - cream with green and silver borders, decorated with an image of a pheasant in a woodland, comprising twelve dinner plates, twelve side plates, twelve salad plates, two small tureens with covers, one larger tureen and cover, together with a spare cover, five graduated oval dishes and a ladle, together with two similar side plates without decoration. (qty) £60-90
- 229 A Royal Albert Old Country Roses tea and dinner service - for six plus place settings, including 7 dinner plates, 10 salad plates, 6 side plates, 8 bowls, 7 cups, 12 saucers, 3 small dishes, 2 teapots, 2 milk jugs, salt & pepper, sauce boat and a teapot cover. (qty) £100-150
- 230 A vintage ceramic bottle in the form of a skittle - decorated with bowling imagery, together with two bird figures and a small blue and white vase. (4) £30-50
- 231 A Georgian clear glass leach jar - circa 1800, of globe form with an everted rim and raised on a conical base, 32cm high, together with a French clear glass and brass wine fountain. (2) £80-120
- 232 A late 19th century continental vase and cover - with twin handles and decorated in lower relief with vines and continual procession of figures, 35cm high. £60-90
- 233 Lenci Madonna - signed on base, Lenci Made In Italy, 21cm. £50-80
- 234 Carltonware Guinness wall toucans - graduated in size, 26cm (largest), together with two later Japanese flying ducks. (5) £40-60
- 235 A pair of vintage ceramic cruets - of truncated tapering conical form, with black and white decoration, together with two other pairs and a similar single pepper. (7) £30-50
- 236 A Czech Republic confetti glass vase - of yellow colourway, raised on a green circular foot with paper label, 30cm high. £30-50
- 237 A Murano style summerso yellow glass vase - of hexagonal form, 22cm high, together with another pink/orange example and a rectangular clear glass vase. £50-80
- 238 A Luck and Flaw Margaret Thatcher novelty teapot - after the Spitting Image character, with a speckled blue and green glaze, 20cm high. £250-350
- 239 A vintage Cortendorf wall plaque - in the form of a woman's head, with blue hair, 23cm high. £20-40
- 240 Goran Warff for Kosta Boda blue glass vase - signed to base with incised number 40058, 32cm high, together with a Kosta Boda dolphin by the same hand, numbered 50120 and a Murano glass snake vase. (3) £120-180
- 241 A vintage Michelin Mr. Bibendum ceramic ashtray - the figure in a jovial pose on the edge of the tray, 12cm high. £30-50
- 242 A Burleighware jug - moulded with a parrot handle, together with another similar and a small collection of sundry items. (7) £40-60
- 243 Norman Stuart Clark torso vase - blue and decorated with coloured canes, engraved signature to lower right leg, 33cm high. £300-500
- 244 An early 20th century glazed terracotta vase - with twin handles and sgraffito decoration depicting owls and a field mouse, 14cm high, together with a paperweight modelled in the form of a leaf cluster. (2) £30-50
- 245 A Luck and Flaw Ronald Reagan novelty teapot - after the Spitting Image character, in a Blanc de chine glaze, 26cm high. £40-60
- 246 A Luck and Flaw Margaret Thatcher novelty teapot - after the Spitting Image character, with a Blanc de chine glaze, 20cm high £40-60
- 247 Andre LORET for Sidmouth Pottery - model of a horse, ceramic with a matte glaze, incised signature to underside, 35cm high. £40-60
- 248 A 20th century Sitzendorf figure - the gentleman with flowers and wearing a purple coat, 16cm high. £20-40

- 249 A pair of Bristol blue cordial glasses - the thistle shaped bowls on spiral reeded stems, 15cm high. (2) £20-40
- 250 A 20th century glazed ceramic figure - Tin Miner, 27cm high. £20-40
- 251 A late 19th century continental cabinet plate - decorated with exotic birds, 21cm diameter. £30-50
- 252 A large Monart style white marbled glass dish - with a broad lip, 43cm diameter. £50-80
- 253 Mary Rich (British 1940-2022) teapot - in the oriental style, pink glazed with gilt decoration and bamboo handle, impressed mark to base, 9cm high, together with a late 19th century Chinese teapot. (2) £40-60
- 254 An 18th century Albarello style majolica jar - foliate decorated with a medallion featuring a winged head and three legs, 27cm high. £60-80
- 255 A Worcester 18th century bullet shaped teapot - decorated with floral sprigs, 15cm high. £50-80
- 256 A 19th century Staffordshire pearlware figure - a young woman standing beside a tree, 15cm high, together with another of a young man holding a chicken. (2) £80-120
- 257 A late 19th century fairing - 'Five O'Clock Tea', featuring a group of cats, 10cm high, together with another and two further similar groups. (4) £30-50
- 258 A late 19th century fairing - 'Modesty', modelled as a spill holder, 10cm high, together with two other fairings. (3) £30-50
- 259 A late 19th century fairing - 'Shall We Sleep First or How' modelled as a vesta box, together with two other fairings. (3) £30-50
- 260 A late 19th century fairing - 'The Last One in Bed Put Out the Light' modelled as a vesta box, together with two other fairings. (3) £30-50
- 261 A late 19th century fairing - 'Oysters Fare' modelled as a vesta, together with two Welsh Tea Party fairings and two further. (5) £30-50
- 262 A 19th century Staffordshire pastille burner - modelled as a hexagonal cottage, 15cm high, together with two further cottage style pastille burners and two Staffordshire cottages. (5) £30-50
- 263 A set of eight Royal Crown Derby plates - decorated in an Imari palette with gilt details, together with a square serving dish. £80-120
- 264 NO LOT
- 265 A 19th century Staffordshire pearlware figure - a young woman standing wearing a brown cloak, 14cm high. £40-60
- 266 A 19th century Staffordshire pearlware figure - a gentleman wearing a brown cloak and yellow breeches, raised on a square base, 20cm high. £60-80
- 267 A 19th century Delft plate - depicting a harvest scene and vignette marked 'July', 23cm diameter, together with another similar slaughtering a pig marked 'November'. (2) £40-60
- 268 A 19th century Staffordshire flatback figure - David Garrick as Richard III, 25cm high. £60-90
- 269 A pair of early 20th century cricketing figures - each in a batting pose, 19cm high. (2) £20-40
- 270 A 19th century German salt glazed bottle - with slab sides and foliate decoration, 21cm high. £40-60
- 271 A 19th century continental figure of a gentleman - wearing a yellow jerkin, 20cm high. £30-50
- 272 A 19th century German stein - decorated with sprigs on a mottled puce ground and fitted with pewter mounts, 27cm high. £30-50
- 273 An 18th century green glass magnum bottle - with an off-centre neck, 33cm high. £30-50
- 274 A Brampton salt glazed tureen - oval decorated in low relief with flowering foliage and ploughing scene, the cover with a knob in the form of a recumbent cow, 28cm wide. £30-50
- 275 A pair of small Quimper style vases - of rectangular baluster form and decorated with flowers, 12cm high. (2) £20-40
- 276 An 18th century Italian majolica tazza - decorated with floral sprigs, 29cm diameter, together with a majolica style coffee pot. (2) £30-50
- 277 A 19th century majolica plate - decorated with grapes, 23cm diameter, together with another larger ribbed dish. (2) £20-40
- 278 An early 18th century tin glazed charger, probably Moustier - decorated with an armorial to the centre within foliate bands, 40cm diameter. £100-150
- 279 Three 19th century pearlware 'Peafowl' plates - decorated with exotic birds, within a moulded border, 24cm diameter. £80-120
- 280 A pair of 19th century creamware pottery dishes - of oval form with pierced border and decorated with botanical subjects 'Narrow Leaved Cytanthus' and 'Byzantine Squill', 27cm wide. (2) £30-50
- 281 An early 20th century Russian plate - gilt decorated with flowers and a monarchist inscription with imperial eagle, 22cm diameter. £50-70
- 282 A Delft tile - decorated with a castle and sailing vessel, mounted as a teapot stand, 16 x 16cm. £30-50

- 283 A 19th century Davenport terracotta wine cooler - in two parts, decorated with trailing vines in low relief and Bacchus mask handles, impressed mark to base, 22cm high. £70-100
- 284 A pair of early 20th century chinoiserie pomander vases - decorated with flowers and foliage on a blue ground, with perforated domed covers, inner covers and baluster shaped bodies, 73cm high. (2) £200-300
- 285 A late 19th century Miessen tea service - decorated with a vine leaf band and serpent handles, nine cups and ten saucers. £30-50
- 286 A quantity of T G Green Granville range kitchenware - together with three mixing bowls. (qty) £20-30
- 287 A collection of T G Green blue and white kitchenware - containers including Sultanas, Spice, Salt, Currants, Rice and Vinegar, together with a range of bowls and plates. (qty) £40-60
- 288 A Fosters Pottery cruet set - honeycomb glaze, comprising salt, pepper and vinegar mounted on an oval tray. £30-50
- 289 A late 19th century continental ceramic inkwell - of square ribbed form with a domed top and brass fittings, decorated with blue flowers and foliate on a white ground, 11cm high. £20-40
- 290 A 19th century Worcester style inkwell - of drum form with gilt and floral decoration, raised on four paw feet and circular plinth. £40-60
- 291 A 19th century Spode dessert service - circa 1830, comprising an oval comport with twin handles and four plates, decorated in the chinoiserie style. £20-40
- 292 A vintage cast plaster table lamp - of bronzed sculptural form, 36cm high £20-40
- 293 – 300 NO LOTS
- ORIENTAL – Lots 301 to 337**
- 301 A amethyst coloured hardstone elephant - 4cm high. £30-50
- 302 A Japanese Meiji period blue and white brush pot - of dome circular form, decorated with flowers and a grasshopper, character mark rear side, impressed character mark to base, 12cm diameter. £60-90
- 303 A Japanese Meiji period blue and white brush pot - of dome circular form, decorated with flowers and a grasshopper, character mark rear side, impressed character mark to base, 12cm diameter. £60-90
- 304 A Chinese blue and white rouleau vase - decorated with a continuous image of an exotic garden, 26cm high, together with two further smaller blue and white vases. (3) £40-60
- 305 A pair of large Japanese Satsuma stoneware vases - decorated with warriors and dragons, the covers with dragon finials, raised on three feet, height 57cm. £80-120
- 306 A celadon glazed censer - of barrel form and raised on three peg feet, 12cm diameter. £30-50
- 307 A Chinese Qing Dynasty blue and white flared bowl - decorated with a bird amongst foliage, 15cm diameter, together with five further similar bowls. (6) £30-50
- 308 A pair of Chinese blue and white vases - of octagonal baluster form, decorated with flowers and gilt elephant mask handles, 28cm high, together with a small gu shaped vase and another vase (4) £40-60
- 309 A late 19th century Chinese Kraak style plate - of typical form and decorated with a grasshopper, 26cm diameter, together with two further similar plates. (3) £50-80
- 310 A Chinese grisaille painted tea bowl - decorated with four figures in an interior, 8cm diameter. £40-60
- 311 A set of seven Chinese blue and white plates - decorated with a vase of flowers to the centre, 22cm diameter. (7) £60-90
- 312 A 18th century Chinese tea bowl - decorated with figures in a landscape, 8cm diameter, together with another tea bowl, two tea cups and a small oval shaped tray. (5) £40-60
- 313 A small Japanese cloisonne vase - decorated with wisteria on a dark blue ground, on an associated turned base, 7cm high, together with a cloisonne baluster shaped vase decorated with dragons amongst clouds. (2) £40-60
- 314 A late 19th century Chinese bowl - decorated with chrysanthemums and other flowers, with a scalloped rim, 23cm diameter, together with another plate. (2) £30-50
- 315 A late 19th century famille rose plate - decorated in enamels depicting deer, flowers and a butterfly, 23cm diameter, together with a pair of famille vert plates. (3) £50-80
- 316 A late 19th century Chinese famille vert bowl - decorated in enamels showing chrysanthemums, 23cm diameter, together with two further plates. £40-60
- 317 A late 19th century ginger jar - with blue and white prunus decoration, 13cm high, together with three blue and white saucers and an oriental style jug. (5) £30-50

- 318 A pair of early 19th century Chinese famille vert helmet shaped jugs - with a stalk handle and raised on a circular foot, 12cm high, together with a navette shaped dish within an upholstered box. (3)  
£40-60
- 319 An early 19th century Chinese tea cup - decorated with a vignette showing figures in a boat, 7cm high, together with a saucer and a tea bowl. (3)  
£40-60
- 320 A late 19th century Chinese baluster shaped vase - decorated with trailing flowers, 41cm high.  
£60-90
- 321 A late 19th century Chinese famille verte vase - decorated with warriors and horseman, 36cm high.  
£30-50
- 322 An early 20th century Chinese crackle glaze vase - the cover with a lion knob, decorated with warriors, 31cm high, together with another similar smaller, two ginger jars and a pair of baluster vases. (6)  
£30-50
- 323 A Meiji period bronze vase - shaped with a pair of relief decorated shields on a character decorated ground, 30cm high, together with a ceramic teapot.  
£30-50
- 324 An early 20th century Japanese lacquer bowl and cover - gilt decorated with prunus, 16cm diameter.  
£20-40
- 325 A pair of early 20th century Japanese Kutani vases - decorated with birds and flowers, 12cm high, together with a ceramic dog of fo, raised on a square base decorated with waves, clouds and bats, 19cm high. (3)  
£150-250
- 326 A Chinese Tang style warrior figure - green and yellow glazed, the seated figure raised on a rectangular plinth, 23 x 14 x 48cm.  
£60-80
- 327 A small early 20th century Japanese ginger jar - blue and white decorated with flowers, 12cm high.  
£30-50
- 328 Japanese Edo period  
Scholars in a compound  
Watercolour  
Framed and glazed  
Picture size 25 x 19cm  
Together with two other similar works (3)  
£40-60
- 329 A 19th century Japanese vase - of tapering form with a flared neck, decorated with dragons, birds and pearls amongst clouds on a yellow ground, character marks to base, 23cm high.  
£150-200
- 330 A nest of four Chinese hardwood tables - rectangular altar style, with scrolled ends and carved aprons, raised on square legs.  
£120-180
- 331 A late 19th century Japanese Shodana - of asymmetrical form with an arrangement of shelves, cupboards and panels incorporating prunus carved galleries, width 150cm, height 225cm, depth 44cm.  
£50-100
- 332 An early 18th century Chinese Kangxi blue and white plate - decorated with a vase of flowers, 22cm diameter, together with two further similar plates. (3)  
£100-150
- 333 20th Century Japanese School  
Fallen Shogun  
Print  
Framed and glazed  
Picture size 30 x 40cm  
Overall size 42 x 52cm  
£30-50
- 334 An early 20th century black lacquer trunk - rectangular with brass bail handles, 56cm wide.  
£20-40
- 335 A pair of early 20th century Chinese bronze vases - decorated with elephant mask handles and panels showing exotic birds, 9cm high.  
£30-50
- 336 An early 20th century Japanese script poster - within a moulded hardwood frame, 135 x 39cm.  
£20-40
- 337 A Japanese Meiji period shodana - incorporating shibayama and carved foliate panels of typical asymmetric form, with an arrangement of sliding panels and cupboards incorporating blue lacquer, 95 x 28 x 174cm.  
Ivory exemption certificate number 1Y8AK74A.  
£400-600

338 – 350 NO LOTS

**COINS, BANKNOTES, STAMPS AND POSTCARDS –  
Lots 351 to 368**

- 351 A quantity of coinage - mostly foreign, together with three banknotes.  
£20-30
- 352 An Isle of Man 2013 Super Crown - limited edition 203-999, boxed with certificate.  
£40-60
- 353 A quantity of coinage - mostly 20th century UK with some foreign.  
£20-40
- 354 A WWI War Medal - awarded to L R Miners, together with a 1939-45 War Medal. (2)  
£20-40
- 355 Eight silver shillings - 1887-1911, 45g.  
£30-50
- 356 An album of 20th century world stamps.  
£10-15
- 357 Three silver 6d's - 1903, 1910 and 1919. (3)  
£20-40
- 358 A George V half crown - 1930, together with two 1932 florins and a 1925 florin. (4)  
£30-50
- 359 Two George VI pennies - 1950 and 1951, together with an early Elizabeth II penny, 1953. (3)  
£20-40

- 360 Ten late 19th century and early 20th century florins - 1873-1919. £30-50
- 361 A Victorian 2d coin - 1848, together with a George IV one and a half pence coin and a Churchill crown. (3) £10-20
- 362 A collection of Royal Mail presentation packs - 1992-2007 in four albums. £40-60
- 363 A quantity of First Day Covers - mostly Elizabeth II, contained within seventeen albums. (17) £80-120
- 364 A collection of UK and Commonwealth stamps - mostly mid to late 20th century, including Canada, New Zealand and Australia, contained within eight albums. £60-80
- 365 A collection of 19th century UK franked envelopes - some with addresses in the empire. (qty) £20-40
- 366 A Piedfort silver proof £2 coin - boxed with a certificate, together with three other silver proof coins. (4) £120-160
- 367 A silver proof Dollar - to commemorate the founding of the Hudson Bay Company, boxed with certificate, together with a Royal Wedding commemorative coin and four other silver coins. (6) £100-150
- 368 A collection of South American bank notes - together with reproduction US Confederate notes. £10-20

369 – 390 NO LOTS

### FASHION – Lots 391 to 423

- 391 A quantity of late 19th and early 20th century ladies garments - including gloves, slips and underwear, together with items of voile, fabric and lace. £30-50
- 392 A quantity of 19th and early 20th century lace - including collars, capes and sections of blouse. £30-50
- 393 A quantity of 19th and early 20th century shoes - including a pair of late Georgian black leather shoes with flat toes and bright cut buckles, a pair of bead shoes, a pair of Chinese blue silk shoes, two parasols and handbags. (qty) £50-80
- 394 A 19th century Ottoman robe - red velvet and gilt bullion with extensive foliate decoration, 116cm long. £120-180
- 395 An early 19th century poke bonnet - blue floral cotton fabric, together with four further bonnets. (5) £30-50
- 396 A blue suede windcheater - by Pelwear England, with an elasticated waistband, 59cm long. £30-50

- 397 A 19th century white cotton Surrey smock - the pocket flanked by floral white-work embroidery, signed and dated in cursive script 'J Dunkin 1856', lower right side. £60-90
- 398 A Georgian style blue cloth cut-away frock coat - the collar fitted with a ribbon bow and white lace to cuffs, the buttons of cut steel. £30-50
- 399 A quantity of silk and fabric - including a parcel of bronze silk fabric, together with head scarves etc. (qty) £30-50
- 400 A child's pink and cream silk dress - with a harlequin bodice panel, lace trim, and leg-o-mutton sleeves, 82cm long, together a similar cream silk dress and another silk dress. (3) £20-40
- 401 A child's pink silk dress - in the 18th century style, 78cm long, together with a light pink dress, a satin dress and a part complete coral silk dress. (4) £30-50
- 402 A Victorian bronze silk dress - with lappets around neckline with lace trim, together with a black skirt and sundry. £20-40
- 403 A vintage evening dress - bottle green wool fabric circa 1940's with matching sequined bolero jacket, 156cm long, together with a white evening dress with fur cuffs. (2) £30-50
- 404 An 18th century style cream silk waistcoat - embroidered with stars and flowering foliate border, 44cm long, together with a part constructed Victorian style sequin dress and an early 20th century pink silk bodice. (3) £40-60
- 405 A contemporary purple shot silk evening dress - with black velvet bodice, long skirt and matching wrap. £40-60
- 406 A 19th century Ottoman cloak with fur trim - decorated in a Paisley pattern. £80-120
- 407 Simone Rocha for H & M pink fabric bag - the shoulder strap formed in a bow. £10-15
- 408 A pair of ladies trousers by Chanel - black wool evening style, legs with black velvet stripes and double buttons to waist band, size 14. £10-15
- 409 A pony skin clutch bag - tan hide with gilt metal fittings. £10-15
- 410 A mink stole - together with another incorporating head and tail. (2) £20-40
- 411 A contemporary ladies black suede jacket by Dion's - decorated with sewing themed imagery in coloured silks, with a red lining, size 14. £20-40
- 412 A Burberry reversable trench coat - traditional cotton gabardine with green and blue woollen tartan pattern, 103cm long. £50-100
- 413 A black fur cape - with brown satin lining. £10-20

- 414 A brown fur cape - by Ramlow of Flint Michigan, with brown satin lining, 43cm long. £10-20
- 415 A ladies fur coat - of a pink hue, cut with deep cuffs and broad collar, 108 long. £50-80
- 416 A brown faux fur ladies waistcoat - with a pompom tie, size small, together with two snoods and a fur headband. (4) £20-40
- 417 A fur bolero jacket - with a brown satin lining, 34cm long. £20-40
- 418 A brown fur mantle - with a brown satin lining. £15-20
- 419 A pair of Ecco ladies black leather calf length boots - with rubber soles, size 36. £20-40
- 420 A vintage ladies hat - blue straw with a white and blue voile band, together with a brown ladies hat, both within a cardboard hat box. (2) £20-30
- 421 A pair of gentleman's black leather shoes - Oxford pattern, approx size 9, together with another pair of black shoes and a pair of brown Monk's pattern shoes. (3) £30-50
- 422 A leather and canvas fashion bag - olive and brown with a checked interior. £20-40
- 423 An RAF overcoat - R.E. City Ltd London, with interior label 'Cloth Made To Air Ministry Standard by Crombie, Aberdeen, Scotland', length 110cm, an RAF jacket, size small/medium, length 69cm, together with a pair of trousers, length 101cm and a peaked RAF cap, an RAF mess jacket and waistcoat, jacket length 49cm, together with two pairs of trousers, lengths 102cm and 104cm, two white shirts with detachable collars, a burgundy velvet like cummerbund and bow tie, a pale blue cummerbund and two black bow ties. £50-100

424 – 465 NO LOTS

#### MILITARIA – Lots 466 to 480

- 466 A WWI War Medal 1914-1981 - together with a War Service Mercantile Marine, both presented to Egon Hansen. (2) £30-50
- 467 A WWII War Merit Cross - on a ribbon, together with a Winterschlacht im Osten medal and an Iron Cross (3) £40-60
- 468 A WWII RAF forage cap - together with five Perspex RAF 'trench art' jewels, a collection of Civil Defence buttons, a Welcome Home flag and a wireless telegraphy booklet. (qty) £40-60
- 469 Two Scottish re-enactment targes - of typical form, brown fabric clad with brass studs, 50cm diameter. (2) £30-50
- 470 Three plastic training broadswords - with basket hilts, 103cm long, together with a plastic training target. (4) £40-60

- 471 A tartan kilt - Black Watch, together with a 'Glen Esk' black leather belt and a quantity of knee length socks and garters, (qty) £40-60
- 472 An early 20th century court sword by Wilkinson Sword - with black leather scabbard and brass fittings, 92cm long. £100-150
- 473 A late 20th century Wilkinson Sword Court Sword - on a hardwood mount bearing a presentation plaque relating to the handover of Hong Kong, 107cm long. £30-50
- 474 A 20th century Scottish basket hilt broadsword - with a pierced basket hilt and polished steel scabbard, together with a reproduction Spanish rapier. (2) £80-120
- 475 A 4.5" brass shell case - dated 1961, fitted with a dummy projectile, painted blue with decals, 104cm high. £50-80
- 476 A reproduction of a 19th century midshipman's uniform - comprising jacket, trousers and straw hat. £40-60
- 477 A quantity of expended brass cartridges - various calibres. £15-20
- 478 A Royal Military Police cap - together with three military police related books. (4) £20-40
- 479 A Russian naval ushanka - together with a similar Russian police ushanka and a Russian army cap badge. (3) £20-40
- 480 A pair of brown leather riding boots - together with a pair of corduroy breeches, a brown leather Sam Brown and a ground sheet. (4) £40-60

#### BOOKS – Lots 481 to 500

- 481 DOYLEY Charles, The European in India - published Edward Orm 1813, engravings J H Clark and C Dubourg, with green leather boards and gilt tooling, including twenty hand-coloured plates. £600-900
- 482 JOHNSON Samuel, Dictionary of the English Language - published Harrison & Co. 1786, with tan leather, together with two other 18th century volumes Natural Philosophy and Book of Martyres. (3) £40-60
- 483 CRABBE George Poetical Works - published John Murray 1834, half binding in black leather with marbled board, 8 volumes. £20-40
- 484 ASHLEY Clifford The Ashley Book of Knots - Doubleday & Co. 1950, with blue cloth boards. £10-20
- 485 Tom Webster's Annual 1922 - Daily Mail cartoons, together with six further books of early 20th century cartoons including Bruce Barnsfather. (7) £20-40

- 486 MACKAIL (JW) The Life of Willima Morris - published Longmans, Green & Co. 1899, half bound in tan leather with gilt tooling and fawn cloth boards. (2) £150-200
- 487 BURNE-JONES Georgiana Memorials of Edward Burne-Jones - published MacMillan & Co. 1904, in two volumes, half bound in tan leather with gilt tooling and fawn cloth boards. (2) £150-200
- 488 TENNYSON Alfred Works of Tennyson in Six Volumes - Strahan & Co. 1873, full brown leather with gilt lettering and page edges. £80-120
- 489 SHAKESPEARE William Complete Works in Forty Volumes - published J M Dent & Co. circa 1895, with yapp binding in red Moroccan leather and gilt lettering, within an oak book trough. (40) £120-180
- 490 ELIOT George Complete Works in Eight Volumes - published John D Morris & Co. 1904, half bound in red leather with gilt tooling and marbled boards, limited edition 53 of 1,000 sets, together with two further George Eliot volumes. £80-120
- 491 DICKENS Charles Works in Twenty two Volumes - published Chapman & Hall library edition, circa 1875, in green embossed cloth binding and gilt lettering. (22) £60-80
- 492 CHAUCER Geoffrey - The Works of Geoffrey Chaucer. Facsimile of the William Morris Kelmscott Chaucer - published World Publishing Company, 1958, with embossed ivory cloth boards and dust jacket. £30-50
- 493 SYMONDS (RW) The Present State of Old English Furniture - Duckworth & Co, circa 1927, red cloth binding with gilt lettering, together with a quantity of other furniture and craft related books. (qty) £30-50
- 494 A quantity of books - mostly literature, titles including Little Women, Seven Pillars of Wisdom, Nostromo and The English Year. (qty) £70-100
- 495 A quantity of books - mostly literature, titles including The Secret Garden, Four Feathers, Kim and Creatures Great and Small. (qty) £70-100
- 495A CHURCHILL Winston S Into Battle - published Cassell & Co, eighth edition 1941, bound in blue cloth, £10-20
- 496 A small quantity of books - reference and literature, some with leather bindings. (qty) £40-60
- 497 TOMPKINS Herbert W Highways & Byways in Hertfordshire - published MacMillan & Co. 1913, blue cloth binding, illustrations Frederick L Griggs, together with eleven other similar county volumes, many illustrated by F L Griggs and another volume. £30-50
- 498 PLUMPTREE Arabella The Healthful Cookery-Book - published R Crosby, distressed half leather binding with marbled boards. £60-80
- 499 HUXLEY Aldous Brave New World - published Chatto & Windus 1932, with blue cloth binding, together with three other volumes, The Devil's of Loudun, Waiting for Godot and Zuleika Dobson. (4) £80-120
- 500 MOORE Thomas Poetical Works - published A & W Galignani circa 1827, red leather with gilt tooling, together with another volume The Stires of Decimus Junius Fuvinali. (2) £30-50

#### TOYS AND DOLLS – Lots 501 to 514

- 501 A extensive suite of Edwardian style dolls house furniture - including two bedroom suites, including wardrobes, dressing tables, beds, wash stands etc, along with parlour items and dining table, also including furnishings, linen and several small early 20th century celluloid and ceramic dolls. £120-180
- 502 An early 20th century dolls house walnut polyphon - in the form of an upright piano, together with three cut steel discs, 22cm wide. (4) Ivory licence: KKUC81N2 £80-120
- 503 An early 20th century French boudoir doll - the pressed stockinette head with painted green eyes and blond hair dressed in a bun, in a period black velvet dress, 46cm high. £80-120
- 504 A vintage celluloid doll - wearing national costume, 27cm high. £20-40
- 505 A Pelham Puppets Caterpillar - boxed, together with a Pelham Puppet horse. (2) £20-40
- 506 A vintage Japanese stuffed toy set - modelled as two dogs, fitted with a music box, together with a pyjama case and a Chiltern Toys lamb. (3) £20-40
- 507 An early 20th century composition head doll - with articulated eyes, open mouth, composition limbs and fabric body, 70cm high. £30-50
- 508 A golden plush teddy bear - stitched nose and articulated limbs, 61cm high, together with a pyjama case in the form of a dog. (2) £30-50
- 509 A mid 20th century SuperTrix construction set - boxed, set number 368, with guide book. £20-40
- 510 A vintage tin plate toy motorboat by JEP - Ruban Bleu no. 0, with white and red hull, including associated key, 30cm long. £30-50

- 511 Merrythought for Harrods - a rocking donkey, grey with white tail and mane, together with a chrome plated rocker. £40-60
- 512 A Triang Queen Anne dolls house - circa 1965, painted sky blue, 61cm wide, together with a quantity of furniture. (qty) £30-50
- 513 A collection of mostly Corgi vehicles - with some others, unboxed. (qty) £20-30
- 514 A Corgi No. 1126 Ecurie Ecosse racing car transporter - comprising a dark metallic blue body with yellow lettering, boxed with instructions and packing pieces. £50-80

515 – 530 NO LOTS

### SILVER – Lots 531 to 564

- 531 A white metal hand mirror - stamped Sterling, repousse decorated with flowers and incorporating a bevelled circular plate, together with a silver backed brush, rectangular silver lids, some other white metal and plate. (qty) £60-90
- 532 A silver mounted parasol handle - Birmingham 1889, the knop attached to a celluloid foliate engraving. £30-50
- 533 A silver dressing table brush set - Sheffield 1924, engine turned with beaded border, comprising mirror, three brushes and a silver topped glass jar, together with another brush and mirror. £100-150
- 534 A silver cigarette case - Birmingham 1919, engraved with foliage and ownership initials, together with a pair of egg cups and six boxed coffee bean spoons, 156g. £60-90
- 535 A boxed set of six silver gilt spoons - Sheffield 1965, 73g, together with six butter knives and a plated spoon. £40-60
- 536 A silver bonbon dish - Sheffield 1902, oval with pierced decoration, 19cm wide, together with a silver salt, a circular dish and a silver topped bottle, 144g. £70-100
- 537 A silver napkin ring - Birmingham 1985, together with a 'Gin' label and a small quantity of plate. (qty) £20-40
- 538 A silver thimble - Birmingham 1929, 15mm, 3g. £10-15
- 539 A silver photograph frame - Chester 1919, of shaped rectangular form with repousse decoration, aperture 18 x 13cm, 24cm high. £60-80
- 540 A pair of silver table spoons - Dublin 1769, John Shiels, engraved with ownership initials, 142g. £140-160

- 541 A silver and enamel topped dressing table bottle - Birmingham 1924, with a clear cut glass body, together with four further various glass and silver mounted dressing table bottles. (5) £50-60
- 542 A pair of crescent shaped decanter labels - London 1814, Phipps, Robinson & Phipps, marked 'Brandy' and 'Rum' respectively, 21g. £100-150
- 543 A nutmeg grater in the form of an acorn - circa 1780, 26g. £120-160
- 544 A silver and enamel badge of office - 'Chairman Royal Institution of Chartered Surveyors Devon & Cornwall Branch', boxed, together with a silver pencil, a single masonic cufflink, and works of Tennyson with silver boards. (4) £60-90
- 545 A silver three piece tea service - Dublin 1833, James Moore, of gourd form with foliate engraving, raised on leaf bracket feet, 1323g.  
Ivory licence: NVDIDV7M  
£2000-2500
- 546 A silver baby rattle - Birmingham 1900, Cornelius Saunderson, of foliate decoration with mother of pearl teether and ring, 56g. £260-280
- 547 A silver single cigar case - Birmingham 1910, Deakin & Francis, engraved with a crest and gilded interior, 60g. £150-200
- 548 A Victorian silver vinaigrette - with a scalloped oval engine turned case, the gilded interior with a pierced grille, 20g. £240-280
- 549 An amber and gold mounted cigar holder - in a silver foliate case, Birmingham 1914, decorated with flowers and foliage. £120-160
- 550 A Victorian silver babies rattle - Birmingham 1850, George Unite, with foliate repousse decoration and incorporating a coral teether. £280-350
- 551 A George IV silver brandy warmer - London 1824, Rebecca Emes & Edward Barnard, lidded with an ebonised knop and handle, engraved with armorial, 350g all in. £460-520
- 552 A Victorian silver wine ewer - London 1887, of baluster form raised on a circular foot with a handle in the form of a caryatid, 754g. £1800-2000
- 553 A silver letter opener - Sheffield 1915, Maple & Co., the handle cast with fletching, 56g. £120-160
- 554 A silver tea caddy - Birmingham 1906, Charles Horner, of oval form and repousse decorated with a village scene, 84g. £220-280
- 555 A silver sugar castor - London 1900, Charles Stuart Harris, of baluster form with foliate repousse, 168g. £250-300
- 556 An early 20th century circular tortoiseshell and silver mounted photograph frame - 15cm diameter. £350-400

- 557 A Victorian cut glass and silver mounted inkwell - London 1897, Samuel Jacob, of circular faceted form, the cover with draped foliage and flowers, 10cm diameter. £320-380
- 558 A Victorian silver pounce pot - London 1892, of barrel form and repousse decorated with foliage, 52g. £180-220
- 559 A pair of George III sifter spoons - London 1810, George Wintle, with fruit repousse decorated gilt bowls, 100g. £200-250
- 560 A Victorian silver christening mug - Birmingham 1864, Henry Alkin, of unusual square baluster form with foliate handle and vacant cartouche, 115g. £220-280
- 561 An Edwardian silver table bell - Sheffield 1904, John Round, with pierced flower and foliate decoration. £300-350
- 562 A boxed pair of silver berry spoons - London 1789, Mary Sumner, the gilt bowls repousse decorated with fruit, the handles engraved with foliage, 115g. £160-200
- 563 A syphon or bottle holder - Sheffield 1914, Cooper Bros., with wavy edge, twin handles and pierced decoration, on winged supports, 672g. £550-650
- 564 A silver tea caddy - London 1893, John & Frank Pairpoint, of barrel form and repousse decorated with flowers and foliage, 144g. £300-400

565 – 600 NO LOTS

#### SILVER PLATE – Lots 601 to 606

- 601 An Arthur Price silver plated cutlery service - kings pattern for six place settings, within a mahogany colour canteen £40-60
- 602 An early 20th century white metal bag - repousse decorated with a leaf garland, 20cm wide, together with a silver mounted cut glass vase, napkin ring, plaid brooch, bangle and a necklace (6) £30-50
- 603 A late Victorian silver plated photograph frame - deeply encrusted with flowers and putto, aperture 13cm x 10cm, overall height 29cm £80-120
- 604 An early 20th century single bottle tantalus - the cut glass bottle within a silver plated and brass locking frame, 25cm high £20-40
- 605 A set of six silver plated coasters - circular with foliate decoration, 9cm diam, together with another six smaller and a further four, (16) £20-40
- 606 An oak cutlery box - of shaped rectangular form for a six place setting set, 34cm wide, together with another box (2) £20-30

607 – 620 NO LOTS

#### JEWELLERY – Lots 621 to 671

- 621 A 9ct gold ring - of plaited form, cut, 5.4g, together with a pair of gold plated ear studs (2) £100-150
- 622 An 18ct diamond cluster ring - size L, 2.6g £100-150
- 623 A five stone diamond ring - set in yellow metal £120-180
- 624 A platinum diamond set half hoop eternity ring - size S 2.6g £100-150
- 625 A 9ct gold bracelet - comprising seven pieced oval links 22cm long, 5.8g £100-150
- 626 A quantity of costume jewellery £20-40
- 627 A 9ct gold wedding band - with an engraved faceted design 3.3g £50-80
- 628 An early 20th century 9ct gold brooch - in the form of a guilloche bar, 1.7g, together with a 9ct gold cross-over ring with vacant settings and another small eternity band, (3) £40-60
- 629 A 9ct gold diamond ring - with a floral style setting, size W 2.6g £50-80
- 630 A quantity of costume jewellery £30-50
- 631 A quantity of 9ct and yellow metal ear studs etc - including some hoops and butterfly backs, 11g £80-120
- 632 A yellow metal cluster ring - with a conical setting of sapphires, size P, 4.8g £120-180
- 633 A pair of 9ct tigers eye ear pendants - set with oval cabochon stones, 5.6g £120-180
- 634 An Egyptian revival style brooch - set with a green glass mask between enamelled wings, 3cm wide, together with an amethyst brooch £70-100
- 635 A Georgian cornelian and pearl brooch - heart shaped on a yellow metal backing with a sentimental engraving, 3.2g £120-180
- 636 An 18ct gold and jade set pendant - teardrop shaped, pierced and engraved with a rose, 3.9g £120-180
- 637 A pair of jade and gilt set ear studs - of shaped oval form and decorated with a crane, 62.g £70-100
- 638 A small quantity of costume jewellery - including graduated faux pearl necklaces £20-40
- 639 A George V sovereign - 1914, within a 9ct gold mount, 10g. £450-550
- 640 A 9ct gold curb link watch chain - in two sections with a clasp and bar, 43cm long, 46.4g. £800-1200
- 641 A gilt locket - oval with a vacant cartouche on a foliate ground, on a fine link chain. £40-60
- 642 Bailiwick of Jersey 22ct one pound coin - parish of St Helier, 1983, in a presentation box, 19.5g. £1000-1400

- 643 Bailiwick of Jersey 22ct one pound coin - parish of St Saviour, 1984, in a presentation box, 19.5g. £1000-1400
- 644 Bailiwick of Jersey 22ct one pound coin - parish of St Ouen, 1987, in a presentation box, 19.5g. £1000-1400
- 645 Bailiwick of Jersey 22ct one pound coin - parish of St Mary, 1989, in a presentation box, 19.5g. £1000-1400
- 646 A 9ct gold diamond set ring - set with a band of stones on a milgrain ground, size T, 2.3g, together with a small 9ct signet ring, 0.6g. (2) £70-100
- 647 A diamond and white metal pendant - thought to be white gold, the pail set with a circular cut stone above a further larger oval cut stone in claw settings, 1.2g. £1000-1400
- 648 An 18ct solitaire diamond ring - the claw set stone of approx. 1ct on a yellow gold band, size M, 4g. £1200-1600
- 649 A platinum set solitaire diamond ring - the claw set stone of approximately 2ct. £5000-6000
- 650 A 14ct white gold solitaire diamond ring - with a high claw setting and diamond set shoulders, ring size N, 3.9g. £1000-1500
- 651 An 18ct gold and diamond set ring - the navette shaped central stone flanked by baguette set shoulders, size S, 4.7g. £1800-2500
- 652 A 14ct gold diamond set solitaire ring - the stone of approximately 1ct within a claw setting, size P, 3.2g. £1400-1800
- 653 A 9ct gold solitaire black diamond ring - the circular cut stone within a claw setting, size N, 2.2g. £500-700
- 654 An 18ct white gold solitaire diamond ring - with unusual cross-over setting, size H, 4.3g. £1200-1800
- 655 A pair of 18ct white gold diamond ear studs - each stone approximately 0.5ct. £1200-1800
- 656 A Victorian 18ct gold and sardonyx mourning ring - the matrix carved with a forget-me-not and black enamel to band inscribed 'in memory of', the inner part of the ring engraved 'J T Gibbs died 17th Feb, 1876 aged 37 years', size Q, 3.5g. £350-450
- 657 A Victorian 22ct gold wedding band - hallmarked for 1883, size L/M, 1.5g. £100-150
- 658 A 9ct gold Georgian mourning brooch - eye shaped with a seed pearl border, together with another rectangular mourning brooch, all in 7.1g. (2) £120-150
- 659 A George IV 22ct gold wedding band - hallmarked for Exeter 1822, size Q/R, 0.8g. £80-120
- 660 A Victorian banded agate mourning brooch - the oval cabochon stone modelled within a snake setting, 25.4g. £40-60
- 661 A Victorian 9ct gold framed circular mourning brooch - 5.1 g all in. £30-50
- 662 A uniform pearl necklace with 14ct gold clasp - 43cm long. £40-60
- 663 A 14ct gold dress ring - set with a rectangular blue stone, size P, 3.2g. £100-150
- 664 A 9ct gold fancy link chain - of twist form, 72cm long, 7.9g. £300-500
- 665 A 9ct gold ruby and diamond ring - in a floral setting, size Q/R, 3.3g. £80-120
- 666 An 18ct gold diamond cluster ring - the platform setting with seven stones, size P, 3.5g. £250-350
- 667 A 14ct gold dress ring - set with a rectangular stone, possibly topaz, size O, 4.6g. £100-150
- 668 A 9ct gold fob seal frame - together with a small quantity of yellow metal items, including a ring and 'all seeing eye', 7.1g. £140-160
- 669 A 9ct gold navette shaped dress ring - set with blue and white stones, size Q, 3.1g, together with two gold plated watchstraps. (3) £80-120
- 670 A 9ct gold football fob - Cornwall County Football Association 'Junior Cup Winners' 1926-7, 5.5g. £120-180
- 671 An 18ct dioxide and diamond set ring - the claw set oval central stone flanked by diamond shoulders, size N-O, 4.8g. £250-350
- 672 – 700 NO LOTS

#### WATCHES – Lots 701 to 712

- 701 A 9ct gold gentleman's Rotary wristwatch - the cream dial set out with Arabic numerals and batons, on a plated expanding strap. £180-250
- 702 A quantity of gentleman's and ladies watches. £20-40
- 703 A continental white metal case fob watch - the white enamel dial set out in Roman numerals, together with ten Victorian copper coins. £10-15
- 704 A Seiko gentleman's automatic wristwatch - the black dial set out with baton numerals and date/day aperture at the 3 o'clock position, in a chrome case on a black leather strap, numbered 63098300, together with a Seiko Sportsmatic gentleman's wristwatch, the silvered dial with date aperture at the 3 o'clock position and baton numerals, in a chrome case on a leather strap, case numbered 7904581. (2) £20-40

- 705 A Smiths Astral gentleman's wristwatch - the gilt dial set out with Arabic numerals and a subsidiary dial at the 6 o'clock position, in a gilt case on a tan leather strap. £20-40
- 706 A Bulova Accutron ladies wristwatch - circa 1972, the dial set out with batons and a date aperture at the 3 o'clock position, within a gilt cast and integral deployant strap, model 7278-1, with cushion and box. £40-60
- 707 A Theorema gentleman's automatic wristwatch - the blue dial set out with Roman and Arabic numerals, two subsidiary dials, date aperture, open escapement and exhibition back, on a black leather strap. £80-120
- 712 A 19th century pocket watch movement - Charles Wood of Brimingham. £20-40

713 – 729 NO LOTS

**PICTURES – Lots 729 to 860**

- 729A Jan Merrick HORN (British b. 1948)  
Three Mackerel on a Plate with Lemon and Lettuce  
Oil on board  
Signed with initials lower left, signed verso  
Framed  
Picture size 35 x 41cm  
Overall size 48 x 54cm £60-90
- 730 Jan Merrick HORN (British b. 1948)  
A Mackerel on a Blue and White Plate  
Oil on board  
Signed with initials lower left, signed verso  
Framed  
Picture size 18 x 48cm  
Overall size 33 x 63cm £60-90
- 731 After Guido Reni  
Portrait of Beatrice Cenci  
Oil on canvas  
Signed C. Reyd and dated 1857 mid right  
Framed  
Picture size 75 x 62cm  
Overall size 82 x 69cm £150-250
- 731A Jan Merrick HORN (British b. 1948)  
A Mackerel on a Blue and White Plate  
Oil on board  
Signed with initials lower left, signed verso  
Framed  
Picture size 18 x 48cm  
Overall size 33 x 68cm £60-90

- 732 W. TONKIN  
Potato Gathering  
Oil on canvas  
Signed lower right  
Picture size 43 x 66cm £30-50
- 733 J Robert BUNKIN (XX-XXI)  
HM Tribal Destroyer Nubian Mediterranean 1940  
Gouache  
Signed lower right, artist's label verso  
Framed and glazed  
Picture size 32 x 55cm  
Overall size 48 x 68cm £30-50
- 734 Mary Edith WRIGLEY (1907-2001)  
Still Life Fruit  
Oil on canvas  
Signed lower left and dated 1924  
Framed and glazed  
Picture size 38 x 50cm  
Overall size 50 x 66cm £20-40
- 734A A pair of early 20th century gilt picture frames - composition decorated with flowers and foliage, 35 x 66cm, together with five other frames. (7) £50-80
- 735 Circle of Franz Xaver Pieler (Vienna 1879-1952 Klosterberg)  
Still Life Of Mixed Summer Flowers  
Oil on canvas  
Framed  
Picture size 62 x 49cm  
Overall size 79 x 65cm £50-100
- 736 W. SMITH  
Winter Scene With Cottage  
Oil on canvas  
Signed lower left  
Framed  
Picture size 38 x 59cm  
Overall size 54 x 74cm £30-50
- 736A A late 19th century gilt composition picture frame - aperture 55 x 45cm, together with six further various frames. (7) £40-60
- 737 Early 20th Century Chinese School  
Birds Amongst Bamboo  
Watercolour  
Framed  
Picture size 106cm x 41cm  
Overall size 110cm x 45cm £20-40

- 737A A 19th century gilt frame - of swept foliate form, aperture 72 x 53cm, together with seven other various frames. (8) £40-60
- 738 H.B. DAVIS (Early 20th Century British School)  
Cumberland Ford On The Dell  
Oil on canvas  
Signed lower left and dated 1932, titled verso  
Framed  
Picture size 49 x 75cm  
Overall size 65 x 90cm £20-40
- 738A Steve CAMPS (Cornish contemporary b. 1957)  
Surf's Up with Sid  
Oil on board  
Signed lower right, signed and dated verso  
Framed  
Picture size 23 x 32cm  
Overall size 27 x 37cm £100-150
- 739 Lionel WILLIS (20th Century British School)  
Ingrid Of Mariehamn, Captain E. Mattsson  
Body colour on paper  
Signed and dated July 1976 lower right  
Framed and glazed  
Picture size 39 x 62cm  
Overall size 60 x 82cm £50-80
- 739A Jan Merrick HORN (British b. 1948)  
A Pair of Mackerel on a Wooden Board  
Oil on board  
Signed with initials lower left, signed verso  
Framed  
Picture size 25 x 41cm  
Overall size 38 x 51cm £60-90
- 740 G.P. PIMPANELLA ?  
Market Day  
Oil on canvas  
Indistinctly signed lower right  
Picture size 62 x 91cm  
Overall size 77 x 107cm £100-200
- 741 David PERRY  
Study Of A River In Flood With Trees  
Oil on board  
Signed lower right  
Framed  
Picture size 51 x 91cm  
Overall size 63 x 100cm £20-40
- 742 Portrait of an 18th Century gentleman  
Oil on canvas  
Framed  
Picture size 74 x 60cm  
Overall size 90 x 77cm £20-40
- 743 C. SPITERI  
Study Of Figures Beside A Lake  
Oil on canvas  
Signed lower right  
Framed  
Picture size 76 x 121cm  
Overall size 92 x 140cm £50-100
- 743A Steve CAMPS (Cornish contemporary b. 1957)  
Frolicking with a Frigate  
Oil on board  
Signed lower left, signed and dated verso  
Framed  
Picture size 19cm tondo  
Overall size 26cm tondo £100-150
- 744 Felix Edouard VALLOTTON (1865-1925)  
La Sortie  
Woodcut print  
Picture size 18 x 22cm  
Together with another similar  
L'Etranger  
Picture size 22 x 18cm £10-20
- 745 After William Callow  
A Mountain Chalet  
Watercolour  
Framed and glazed  
Picture size 24 x 32cm  
Overall size 28 x 36cm £20-40
- 745A Jan Merrick HORN (British b. 1948)  
Three Mackerel with Peppercorns and Lemons  
Oil on board  
Signed with initials lower left, signed verso  
Framed  
Picture size 30 x 40cm  
Overall size 43 x 53cm £70-100
- 746 After James Bourne  
Figures On A Track By A Thatched Cottage  
Watercolour  
Framed and glazed  
Picture size 13 x 19cm  
Overall size 30 x 35cm £20-40

- 747 David T FAULL (British 20th Century)  
Treslothan Church  
Watercolour  
Signed lower left, label verso  
Framed and glazed  
Picture size 26 x 34cm  
Overall size 47 x 56cm  
Together with two other watercolours (3) £40-60
- 747A Jan Merrick HORN (British b. 1948)  
Vase of Pink Roses  
Watercolour  
Signed with initials lower left  
Framed and glazed  
Picture size 53 x 49cm  
Overall size 83 x 80cm £50-80
- 748 Pere PONS (Spanish 1949)  
Alarm Clock and Roofline  
Engraving  
Signed and numbered 5/20 lower edge  
Framed and glazed  
Picture size 21 x 16cm  
Overall size 60 x 48cm  
Together with five other engravings (6) £80-120
- 748A Steve CAMPS (Cornish contemporary b. 1957)  
Two Whales on a Victorian Face screen  
Oil on board  
Signed lower left  
131cm high £80-120
- 749 19th Century Continental School  
Figure Beside A Watermill  
Charcoal  
Indistinctly signed lower right  
Unframed  
Picture size 31 x 39cm  
Together with another similar work (2) £20-30
- 749A Steve CAMPS (Cornish contemporary b. 1957)  
Leonard Basking Under The Light  
Oil on board  
Signed lower left, signed and dated verso  
Framed  
Picture size 19cm tondo  
Overall size 26cm tondo £100-150
- 750 Thomas William ARMES (British 1894-1963)  
Tending to a Boat at Low Tide  
Watercolour  
Indistinctly signed lower right  
Framed and glazed  
Picture size 26 x 36cm  
Overall size 50 x 59cm £20-40
- 750A H C (20th Century British School)  
Nude Torso  
Carved oak  
Inscribed with initials rear of plinth  
44cm high £80-120
- 751 Katherine EDWICK (British 20th Century)  
The Old Laundry  
Watercolour  
Signed lower right  
Framed and glazed  
Picture size 31 x 48cm  
Overall size 45 x 61cm  
Together with four other various 20th century watercolours £30-50
- 752 Attributed to Ivan DYBISH  
Ukrainian Village  
Watercolour  
Signed lower right  
Unframed  
Picture size 26 x 36cm £20-40
- 753 Malte SARTORIUS  
Mercato del Pesce  
Signed titled and numbered 2/40 lower edge  
Framed and glazed  
Picture size 42 x 31cm  
Overall size 63 x 52cm £30-50
- 754 PATRICA  
Seeking You  
Serigraph on paper  
Signed and numbered lower edge, label verso  
Framed and glazed  
Picture size 22 x 15cm  
Overall size 46 x 40cm  
Together with two other works by different hands (3) £30-50
- 755 Geoffrey Alan BAKER (British 1881-1959)  
Deer in a Woodland  
Watercolour  
Signed lower left  
Framed and glazed  
Picture size 32 x 22cm  
Overall size 58 x 44cm £20-40

756	Yosl Vladimir Josif BERGNER (1920-2017) Still Life With An Oil Lamp Lithograph Signed and numbered 44/250 with blind stamp lower edge Framed and glazed Picture size 46 x 50cm Overall size 69 x 75cm	£50-80	762	After Pablo Picasso Perrot et Arlequin (I) Lithograph in colours Framed and glazed Picture size 40 x 50cm Overall size 41 x 51cm	£100-150
756A	Steve CAMPS (Cornish contemporary b. 1957) Ginormous George Oil on board Signed lower left, signed and dated verso Oval framed as a rectangle Picture size 15 x 43cm Overall size 31 x 61cm	£100-150	763	Norman BLACK (British 1920-1999) Pre Decimal Money Trompe-l'oeil Oil on board Signed lower right Framed Picture size 14 x 17cm Overall size 19 x 22cm	£30-50
757	Julian OPIE (British b. 1958) Ruth with a Cigarette 2 Screen print from an edition of 250 Framed and glazed Picture size 33 x 25cm Overall size 52 x 43cm	£300-500	764	George NEED (British 20th Century) Nude Pastel Signed lower right, label verso Framed and glazed Picture size 36 x 52cm Overall size 54 x 70cm	£20-40
758	Julian OPIE (British b. 1958) Ruth with a Cigarette 3 Screen print from an edition of 250 Framed and glazed Picture size 33 x 25cm Overall size 52 x 43cm	£300-500	765	British 20th Century Abstract Collage in high relief Framed Picture size 60 x 92cm Overall size 65 x 96cm	£20-40
759	Julian OPIE (British b. 1958) Ruth with a Cigarette 4 Screen print from an edition of 250 Framed and glazed Picture size 33 x 25cm Overall size 52 x 43cm	£300-500	765A	Steve CAMPS (Cornish contemporary b. 1957) Fishing with Frank Oil on board Signed lower left, signed and dated verso Framed Picture size 39 x 49cm Overall size 49 x 59cm	£100-150
760	After Pablo Picasso Au Baiser D'Avignon (VI) Lithograph Framed and glazed Picture size 40 x 50cm Overall size 41 x 51cm	£100-150	766	Edward William COOKE (British 1811-1880) Havre Harbour Watercolour Signed lower left, dated 1865 lower right Framed and glazed Picture size 11 x 24cm Overall size 28 x 39cm	£120-180
761	After Pablo Picasso Le Peintre a l'Atelier (III) Lithograph in colours Framed and glazed Picture size 40 x 50cm Overall size 41 x 51cm	£100-150	766A	Steve CAMPS (Cornish contemporary b. 1957) Small Whale Oil on a stoneware ink bottle 15cm high Together with a painting of the bottle, signed verso (2)	£100-150

- 767 Dorothy Webster HAWKSLEY (1884-1970)  
Portrait of Mia (daughter of Frederick Landseer Griggs)  
Charcoal and coloured chalks  
Signed and dated 1969  
Framed and glazed  
Picture size 21 x 16cm  
Overall size 36 x 29cm £50-80
- 767A Steve CAMPS (Cornish contemporary b. 1957)  
Small Whale  
Oil on a stoneware ink bottle  
Signed to base  
10m high  
Together with a painting of the bottle, Signed and dated verso (2) £40-60
- 768 Frederick Landseer GRIGGS (British 1876-1938)  
Still Life of a Rose Bush  
Pencil  
Framed and glazed  
Picture size 36 x 25cm  
Overall size 50 x 40cm £40-60
- 769 Frederick Landseer GRIGGS (British 1876-1938)  
Crypt  
Sepia sketch  
Indistinctly inscribed and dated 1916 lower left  
Framed and glazed  
Picture size 23 x 22cm  
Overall size 41 x 39cm  
Together with a retrospective exhibition catalogue (2) £50-80
- 770 19th Century School  
Bearded Gentleman  
Oil on canvas  
Framed  
Picture size 19 x 14cm  
Overall size 34 x 28cm £20-40
- 771 Frederick Landseer GRIGGS (British 1876-1938)  
Still Life of a Rose Bush  
Pencil  
Framed and glazed  
Picture size 36 x 25cm  
Overall size 50 x 40cm £30-50
- 772 Dan BALDWIN (British b. 1972)  
Cyclone  
Screen print  
Signed and titled lower edge  
Framed and glazed  
Picture size 80 x 80cm  
Overall size 107 x 104cm £250-350
- 773 Bruce McLEAN (British b. 1944)  
After Sun Soother  
Screen print with colouring  
Signed lower right, numbered 2/75 lower left in pencil  
Framed and glazed  
Picture size 116 x 86cm  
Overall size 129 x 100cm £300-500
- 774 Gabriel OROZCA (b. 1962)  
Black Kites  
Print on wove  
Signed lower right, numbered 66/177  
Framed and glazed  
Picture size 28 x 20cm  
Overall size 56 x 51cm £800-1200
- 775 Sandra BLOW (British 1925-2006)  
Double Diamond  
Screen print in colours  
Signed and titled in pencil to lower edge  
Framed and glazed  
Picture size 65 x 65cm  
Overall size 94 x 90cm £500-800
- 776 Sandra BLOW (British 1925-2006)  
Borderline  
Screen print  
Signed, titled and numbered AP2/8, lower edge in pencil  
Framed and glazed  
Picture size 73 x 73cm  
Overall size 95 x 95cm £500-700
- 777 Joe TILSON (British 1928-2023)  
Let a Thousand Parks Bloom  
Silk screen  
Signed, dated 1971 and numbered 154/550 in pencil lower edge  
Framed and glazed  
Picture size 102 x 70cm  
Overall size 118 x 84cm £300-400
- 777A Steve CAMPS (Cornish contemporary b. 1957)  
Hot Pig  
Oil on stoneware hot water bottle  
Signed to base  
24cm wide £30-50



790	Julian OPIE (British b. 1958) Ruth Smoking Silk screen Framed and glazed Picture size 35 x 24cm Overall size 56 x 44cm	£400-600	796	Jean-Michel BASQUIAT (1960-1988) Cabeza Giclee on canvas Framed Picture size 86 x 62cm Overall size 90 x 65cm	£150-200
791	Kieran RULE (20th/21st Century) So Long Mixed media Signed lower right Framed and glazed Picture size 40 x 30cm Overall size 55 x 44cm	£80-120	797	Jean-Michel BASQUIAT (1960-1988) Sugar Ray Robinson Posthumous publication Framed and glazed Picture size 19 x 19cm Overall size 38 x 30cm	£80-120
792	Tony SHIELDS (British 1938-2024) Portrait of Baron Samedi Acrylic on canvas Signed and dated '09 mid left Framed Picture size 50 x 39cm Overall size 63 x 53cm	£100-150	798	Barbara TRIBE (British 1913-2000) Malinee (1973) Bronze Signed and dated to base, raised on a hardwood plinth with studio label attached 40cm high	£400-600
793	Meg O'DOHERTY (20th/21st Century) Instruction Oil on board Signed, titled and dated 2013 verso Unframed Picture size 58 x 61cm	£30-50	799	Simeon STAFFORD (British b. 1956) Street Party Oil on board Signed lower right, signed, titled, dated 17/9/12 and decorated verso Unframed Picture size 50 x 60cm	£400-600
794	Gerald LAING (British 1936-2011) Dragsters - C T Stokers, circa 1968 Lithograph Signed, titled and numbered 143/150 Framed and glazed Picture size 43cm x 73cm Overall size 62cm x 92cm	£600-800	800	Henry John Sylvester STANNARD (1870-1951) Chickens In The Farmyard Watercolour Indistinctly signed lower left Framed and glazed Picture size 33 x 60cm Overall size 45 x 73cm	£80-120
795	PURE EVIL (British 1968) Marilyn Screen print Framed and glazed Picture size 83 x 66cm Overall size 95 x 75cm	£200-400	801	Frederick James KNOWLES (1874-1931) Blea Tarn Watercolour Signed lower left, sales receipt verso Framed and glazed Picture size 25 x 35cm Overall size 43 x 55cm	£20-40
795A	Early 20th Century British School Dachshund Puppy Colour engraving Indistinctly signed lower right Framed and glazed Picture size 25 x 18cm Overall size 39 x 30cm Together with a lithograph of a cat (2)	£20-40	802	Carl BRENNIR (1850-1920) Fishing On The River Oil on board Signed lower left Framed Picture size 29 x 39cm Overall size 34 x 44cm	£200-250

- 802A Charles Murray INCE (British 1806-1859)  
Landscape with Lake and Castle in the Distance  
Oil on canvas  
Indistinctly signed lower left  
Framed  
Picture size 24 x 90cm  
Overall size 34 x 62cm £250-300
- 803 Henry Martin POPE (British 1843-1908)  
Vale of Crucis Abbey  
Watercolour  
Signed lower right, titled to mount  
Picture size 48 x 73cm  
Overall size 72 x 98cm £120-180
- 803A Jan Merrick HORN (British b. 1948)  
A Pair of Mackerel on a Blue and White Plate  
Oil on board  
Signed with initials lower left, signed verso  
Framed  
Picture size 35 x 41cm  
Overall size 48 x 54cm £60-90
- 804 James Thomas WATTS (British 1853-1930)  
Above Betws-y-Coed Falls  
Watercolour  
Signed with initials lower right  
Framed and glazed  
Picture size 10 x 14cm  
Overall size 27 x 32cm £40-60
- 805 JAX (British 20th Century)  
Castle View St Mawes  
Oil on canvas  
Inscribed, titled and dated '08 to label verso  
Framed  
Picture size 30 x 40cm  
Overall size 36 x 46cm £40-60
- 805A Steve CAMPS (Cornish contemporary b. 1957)  
Whale, Lighthouse and Schooner  
Oil on driftwood  
Signed lower left, signed and dated verso  
Unframed  
10 x 60cm £60-90
- 806 19th Century British School  
Fishing Vessels and Frigate on a Blustery Day  
Oil on canvas  
Framed  
Picture size 27 x 40cm  
Overall size 33 x 46cm £60-80
- 807 Simeon STAFFORD (British b. 1956)  
On the Prom  
Oil on board  
Signed lower right, signed, titled, dated 17/1/19  
and decorated verso  
Framed  
Picture size 48 x 68cm  
Overall size 51 x 71cm £400-600
- 808 E Mary RENNARD (19th/20th Century)  
Bridge and Woodland River  
Oil on canvas  
Signed lower left  
Framed  
Picture size 35 x 45cm  
Overall size 55 x 64cm £30-50
- 808A Flora BLACKETT (British b. 1978)  
Polo Pair - Prince Charles besting his opponent  
Pencil on paper  
Signed and dated '08 lower right, tiled verso  
Framed and glazed  
Picture size 40 x 48cm  
Overall size 62 x 70cm £500-600
- 809 Paul WATKINS (20th Century)  
Mykonos  
Oil on canvas  
Signed lower left, gallery label verso  
Framed  
Picture size 60 x 50cm  
Overall size 62 x 52cm £30-50
- 809A Charles Euphrasie KUWASSEG (French 1833-1904)  
Town in the Tyrol  
Oil on canvas  
Signed lower right  
Framed  
Picture size 31 x 23cm  
Overall size 46 x 35cm £600-800
- 810 David WOODLOCK (British 1842-1929)  
A Glimpse of Snowdon from Garth Bridge  
Oil on board  
Signed lower right, titled to mount, label verso  
Framed and glazed  
Picture size 17 x 22cm  
Overall size 32 x 40cm £150-250

- 811 David WOODLOCK (British 1842-1929)  
On the Birket Stream (nr. Bidston)  
Oil on board  
Titled to mount, label verso  
Framed and glazed  
Picture size 17 x 22cm  
Overall size 32 x 40cm £150-250
- 811A John Sell COTMAN (British 1782-1842)  
Beach West of Whitby  
Pencil and watercolour  
Framed and glazed  
Picture size 8 x 16cm  
Overall size 31 x 36cm £500-700
- 812 Van HENGLAAR (20th Century School)  
Portrait of John Bluff  
Oil on canvas  
Inscribed verso  
Framed  
Picture size 50 x 37cm  
Overall size 58 x 44cm £20-40
- 813 Herbert Edward Pelham HUGHES-STANTON  
(British 1870-1937)  
Figure on a Path in an Extensive Landscape  
Oil on canvas  
Signed and dated 1930 lower left  
Framed  
Picture size 38 x 49cm £200-300
- 813A May Marshall BROWN (British 1887-1968)  
Continental Street Scene  
Oil on board  
Signed lower right  
Framed  
Picture size 34 x 24cm  
Overall size 48 x 35cm  
Together with another similar work, a pair (2)  
£180-250
- 814 J. Tim McDONALD (British 19th/20th Century)  
View of St Pauls from the Thames  
Watercolour  
Signed and dated '27 lower right  
Framed and glazed  
Picture size 16 x 29cm  
Overall size 37 x 47cm  
Together with two other similar works (3)  
£80-120
- 815 J. Tim McDONALD (British 19th/20th Century)  
Figures in a Water Meadow  
Watercolour  
Signed and dated '24 lower right  
Framed and glazed  
Picture size 21 x 33cm  
Overall size 34 x 46cm £30-50
- 815A Jannette BEDDINGTON (British 20th Century)  
Quite Thought  
Charcoal on paper  
Signed and dated May '89 lower right  
Framed and glazed  
Picture size 120 x 92cm  
Overall size 134 x 105cm £1500-1800
- 816 Simeon STAFFORD (British b. 1956)  
Carol Singers Manchester  
Oil on canvas  
Signed lower right, signed, titled and dated 18/7/19  
verso  
Unframed  
Picture size 45 x 56cm £400-600
- 816A Jan Merrick HORN (British b. 1948)  
A Pair of Mackerel in a Skillet  
Oil on board  
Signed with initials lower left, signed verso  
Framed  
Picture size 40 x 40cm  
Overall size 53 x 53cm £70-100
- 817 Steve CAMPS (Cornish Contemporary c. 1957)  
Hector in his Helicopter Winches Wendy to Safety  
Oil on board  
Signed lower left, dated 2025 verso  
Framed  
Picture size 37 x 43cm  
Overall size 45 x 51cm  
Sold for the benefit of Cornwall Air Ambulance  
£100-200
- 818 Steve CAMPS (Cornish Contemporary b. 1957)  
Walter and Williams Warm Return  
Oil on a stoneware bottle  
Signed to base  
25cm wide  
Together with a oil on canvas depicting the above  
bottle, signed lower left, dated verso (2)  
£100-200

819	Valerie DAVIDE (British 1938-2017) Nude Study Charcoal on paper Signed lower right Framed and glazed Picture size 40 x 58cm Overall size 69 x 86cm	£50-80	825	T Weston (British 20th Century) St Michael's Mount Gouache Signed and titled lower edge Framed and glazed Picture size 25 x 34cm Overall size 50 x 59cm	£20-40
820	Valerie DAVIDE (British 1938-2017) Nude Study Charcoal on paper Signed lower right Framed and glazed Picture size 57 x 39cm Overall size 86 x 68cm	£50-80	826	Simeon STAFFORD (British b. 1956) Donkeys on the Beach Oil on ceramic plate Signed lower edge, signed and decorated verso 26cm diameter	£60-80
821	Basil GARSLEY (20th Century) Walk in the Woods Oil on canvas Signed lower left Framed Picture size 44 x 60cm Overall size 55 x 70cm	£40-60	827	20th Century Contemporary Abstract Harbour Acrylic on canvas Unframed Picture size 30 x 30cm Together with another similar work (2)	£20-30
822	Simeon STAFFORD (British b. 1956) View of the Mount Oil on canvas Signed lower left, signed, titled and dated 11/7/19 Framed Picture size 79 x 79cm Overall size 89 x 89cm	£800-1000	827A	In the manner of Ponkle A Ginger Tom Compressed paper and watercolour 30cm wide	£30-50
823	Simeon STAFFORD (British b. 1956) On the Beach Oil on a ceramic plate Signed lower right, signed, titled and decorated verso 23cm diameter	£60-80	828	NO LOT	
823A	20th Century Continental School Figures beside a River with a Windmill Beyond Oil on canvas Indistinctly signed lower left Framed Picture size 49 x 59cm Overall size 66 x 76cm	£40-60	829	20th Century British School Greyhound Pen and ink Framed and glazed Picture size 17 x 12cm Overall size 26 x 20cm Together with three other works (4)	£20-40
824	19th Century British School Distressed Young Mother and Child Oil on board Framed Picture size 20 x 12cm Overall size 40 x 31cm	£20-40	830	Simeon STAFFORD (British b. 1956) Dance Off Oil on ceramic plate Signed lower edge, signed, titled and decorated verso 23cm diameter	£60-80
			831	Colin WESTON (British 20th Century) Still Life of Jug with Apples Oil on canvas Signed lower left Framed Picture size 24 x 29cm Overall size 38 x 42cm	£20-30

832	Early 20th Century British School Mayor of Penzance Oil on canvas Unframed, unstretched Picture size 57 x 67cm	£20-40	838	Wendy HOUMAN (British 20th/21st Century) Abstract Squares Watercolour Signed to mount Framed and glazed Picture size 29 x 18cm Overall size 53 x 43cm Together with another work (2)	£40-60
832A	Leopold SOLOMON (British 1919-1973) Portrait of L S Lowrey in Profile Lithograph Signed and numbered 88/300 in pencil Framed and glazed Picture size 28 x 22cm Overall size 42 x 32cm	£30-50	838A	S BETTS (British 20th Century) Truro Cathedral from the River Oil on board Signed lower right Framed Picture size 49 x 59cm Overall size 62 x 72cm	£40-60
833	Suzie BISHOP Still Life of Jugs Oil on board Framed Picture size 25 x 30cm Overall size 35 x 44cm	£40-60	839	Judy WILLOUGHBY (British 20th/21st Century) Watching TV with the Kids Watercolour Signed lower right Framed and glazed Picture size 41 x 57cm	£30-50
833A	20th Century African School Abstract Female Figure Carved hardwood 37cm high	£20-40	840	Steve CAMPS (Cornish Contemporary b. 1957) Two Whales, Lighthouse and Schooner Acrylic on a hardwood and iron bound rectangular box Signed lower left 33cm wide	£40-60
834	Liz HOBSON (British 20th/21st Century) Bluebells Acrylic on canvas Signed lower right, inscribed verso Unframed Picture size 60 x 40cm	£30-50	841	British School 20th Century Cita, abstract form Oak and granite Base inscribed 'Cita, Lost Scilly, 1997', numbered 66 42cm high Note: The MV Cita ran aground off the south coast of the Isles of Scilly 27th March 1997	£70-100
835	Simeon STAFFORD (British b. 1956) St Michael's Mount Oil on a ceramic plate Signed lower left, signed and titled verso 25cm diameter	£60-80	842	Steve CAMPS (Cornish Contemporary b. 1957) Whale and Schooner Under A Yellow Sky Acrylic on a stoneware ink bottle Signed to base 20cm high Together with another similar smaller example (2)	£50-80
836	David SHEPHERD (British 1931-2017) Cheetah Lithograph Signed in pencil, limited edition 790/1500 Unframed Overall size 35 x 51cm Together with two other prints and a watercolour (4)	£30-50	843	Steve CAMPS (Cornish Contemporary b. 1957) Piebald Pig with his Chum the Chough Stoneware pot with acrylic panel Signed to base 20cm diameter Together with a stoneware ink bottle with a Vessel and Vernon (2)	£40-60
837	20th Century British School Dog and Giraffe in a Pond Oil on canvas Unframed Picture 41 x 41cm	£20-30			

- 843A Ian McCATHY (20th Century)  
Ocean Wanderer, South Atlantic  
Photograph  
Signed, titled and numbered 40/250  
Framed and glazed  
Picture size 94 x 31cm  
Overall size 117 x 59cm £30-50
- 844 Simeon STAFFORD (British b. 1956)  
The Mount  
Oil on a ceramic plate  
Signed lower right, signed and titled verso  
23cm diameter £60-80
- 845 After David ROBERTS  
Entrance to Nablus  
Lithograph  
Framed and glazed  
Picture size 23 x 33cm  
Overall size 51 x 59cm  
Together with a volume, The Holy Land - David Roberts RA, including 123 coloured lithographs and extracts from his journal, published 1982 by Terra Sancta Arts (2) £80-120
- 846 Steve CAMPS (Cornish Contemporary b, 1957)  
A Warm Welcome to William  
Stoneware hot water bottle with acrylic  
Signed to base  
26cm wide £40-60
- 847 George NEED (British 20th Century)  
Boats Low Tide  
Oil on board  
Signed lower right  
Framed  
Picture size 39 x 50cm  
Overall size 51 x 61cm £30-50
- 848 Simeon STAFFORD (British 1956) - Oliver Contemporary Gallery Catalogue Britain at Play, with artist's later annotations and sketches within, together with two further Badcocks gallery catalogues and associated ephemera (7) £20-40
- 849 Attributed to Myles Birket FOSTER (British 1825-1899)  
Fisherfolk at a Jetty  
Watercolour  
Signed with monogram lower left  
Framed and glazed vignette  
Picture size 11 x 15cm  
Overall size 26 x 30cm  
Together with another similar work of Sheep and Collie, a pair (2) £200-300
- 850 Jean Baptiste SAMBAT (French (1760-1827)  
Portrait of a Noble Lady  
Watercolour on ivory  
Signed lower right  
Framed  
4cm tondo,  
4.5cm overall  
Ivory licence: BUEYT4K3 £300-500
- 851 British 19th Century School  
Figures and Castle Ruins Beside a Lake  
Oil on slate  
Framed  
Picture size 18 x 27cm  
Overall size 26 x 35cm £40-60
- 852 Simeon STAFFORD (British b. 1956)  
Dance Off  
Oil on board  
Signed lower left, signed and titled verso  
Unframed  
Picture size 35 x 19cm £150-200
- 852A Les PARSONS (British b. 1945)  
Young Boy with Fishing Net  
Oil on canvas  
Signed lower left  
Framed  
Picture size 29 x 39cm  
Overall size 37 x 47cm  
Together with another similar work (2) £30-50
- 853 British 20th Century  
Purple Pill, Orange Pill  
Acrylic on canvas  
Unframed  
Picture size 100 x 200cm £40-60
- 854 British 20th Century  
Pink Pill, Blue Pill  
Acrylic on canvas  
Unframed  
Picture size 100 x 200cm £40-60

- 855 M WOOD (20th/21st Century)  
Cannaregio  
Lithograph  
Signed, titled and numbered 325/375 in pencil to lower edge  
Picture size 44 x 60cm  
Overall size 63 x 80cm  
Together with two further Venetian views by the same hand (3) £80-120
- 856 After William PAYNE  
Fowey Harbour  
Watercolour  
Framed and glazed  
Picture size 22 x 28cm  
Overall size 35 x 43cm £40-60
- 857 Early 19th Century British School  
The Penitent  
Watercolour  
Framed and glazed  
Picture size 12 x 12cm  
Overall size 25 x 25cm £30-50
- 858 S WALKER (20th/21st Century)  
St Michael's Mount  
Oil on canvas  
Signed lower right  
Framed  
Picture size 39 x 50cm  
Overall size 51 x 61cm £30-50
- 858A Stewart MIDDLEMAS (British b. 1944)  
Fishing Vessel off Porthkidney Beach  
Oil on board  
Signed lower right  
Framed  
Picture size 14 x 14cm  
Overall size 26 x 26cm £40-60
- 859 C PETERS (British 20th Century)  
Rustic  
Black and white photograph  
Inscribed and titled verso  
On a card mount  
Picture size 29 x 24cm  
Overall size 51 x 41cm  
Together with a quantity of other images from the same hand and other members of Camborne-Redruth Camera Club, many with exhibition labels from further afield (13) £60-90

- 860 Simeon STAFFORD (British b. 1956)  
Xmas Day - Cornwall  
Oil on canvas  
Signed lower left, signed and titled verso  
Unframed  
Picture size 80 x 80cm £800-1000

#### RUGS – Lots 861 to 871

- 861 A Heriz rug - with a geometric central medallion, 180 x 127cm. £40-60
- 862 A Chobi kilim runner - 202 x 58cm. £60-80
- 863 A Chobi kilim runner - 148 x 63cm. £50-80
- 864 A Chobi kilim runner - 149 x 55cm. £40-60
- 865 A Chobi kilim runner - 145 x 62cm. £50-70
- 866 A Chobi kilim - 157 x 101cm. £70-90
- 867 A Chobi kilim - 125 x 80cm. £50-70
- 868 A Chobi kilim - 89 x 60cm. £30-50
- 869 A Maimana kilim runner - 201 x 66cm. £60-80
- 870 A Maimana kilim - 155 x 106cm. £60-80
- 871 A Baluchi rug - 132 x 87cm. £50-70

872 – 880 NO LOTS

#### CLOCKS – Lots 881 to 884

- 881 A late 19th century French gilt brass carriage clock - retailed by Mappin & Webb, the case with fluted columns and dentil cornice, fitted with chamfered glass panels, the white enamel dial set out in Roman numerals with a subsidiary alarm dial, 15cm high. £150-200
- 882 A late 19th century French brass repeating carriage clock - the cornice case fitted with chamfered glass panels, engraved with a presentation inscription, 14cm high. £80-120
- 883 An early 20th century anniversary clock - the cream dial set out in Arabic numerals, raised on columnar supports and under a glass dome, 29cm high. £30-50
- 884 An Art Deco style marble mantel clock - with a navette shaped silvered dial set out in Arabic numerals, 34cm high. £50-80

885 – 900 NO LOTS

#### FURNITURE – Lots 901 to 943

- 901 A George IV mahogany teapoy - of sarcophagus form, the fitted interior with an arrangement of five lidded compartments and associated glass mixing bowl, raised on an octagonal stop-reeled support with shaped rectangular base, 42 x 37 x 81cm. £60-90
- 902 A large wicker hamper - with twin handles, 101 x 61 x 56cm. £30-50

- 903 A large pine kitchen table - with a cleated top above a cream painted base with an arrangement of two drawers, on turned and faceted tapering legs, 206 x 88 x 76cm. £200-400
- 904 A Georgian Cattelan Nautilus coffee table - the black vitreous descending spiral top supported by grey steel legs 113 x 103 x 34cm. £200-300
- 905 A vintage teak sideboard - Stateroom by Stonehill, rectangular with an arrangement of three cupboards and three drawers to one side, raised on framed legs, 182 x 43 x 72cm. £100-200
- 906 A Victorian mahogany bow front chest of drawers - with an arrangement of two short and three long drawers, on turned feet, 120 x 53 x 103cm. £50-100
- 907 A vintage onyx circular coffee table - the top above a pierced gallery and raised on three cherub supports, 77 x 33cm. £50-80
- 908 Le Corbusier LC4 style chaise longue - upholstered in black leather with a chrome frame raised on a black steel cradle, 195cm long. £80-120
- 909 A Pieff Beta swivel chair - black leather and tubular chrome on a swivel base. £120-180
- 910 A 19th century elm and ash West Country chair - with a hoop stick back above a solid contoured seat, on turned legs joined by an H-shaped stretcher. £30-50
- 911 A pair of late 19th century Dutch oak side chairs - with carved panel backs and solid seats and lion mask terminals, on square legs joined by H-shaped stretchers. (2) £100-150
- 912 An 18th century style walnut framed fretwork wall mirror - the shaped cornice incorporating a gilt scallop shell, 70cm x 43cm £60-80
- 913 A George III oak bureau - the cleated fall enclosing a fitted interior above an arrangement of four drawers, on bracket feet, 91 x 51 x 98cm. £60-80
- 914 A George II oak drop leaf table - the oval top above a pair of peripheral drawers, on turned legs joined by stretchers and ending in spade feet, 127 x 140 x 70cm. £100-150
- 915 A set of five ash spindle back chairs - with rush seats and turned legs joined by peripheral stretchers. (5) £40-60
- 916 A 19th century ash ladder back rocking chair - with shaped splats and rush seat, on turned legs joined by peripheral stretchers and terminating in rockers. £30-50
- 917 An 18th century ash baby walker - of turned construction, the central square with play rings and turned supports with a hexagonal base incorporating castor wheels at each corner, 74 x 44cm. £100-150
- 918 A George III mahogany cellarette - of sarcophagus form, the hinged top revealing a tin liner, with lion mask ring handles, on tapered square legs ending in brass cappings and castors, 57 x 38 x 58cm. £50-80
- 919 A 17th century style oak cradle - with a canopy and lozenge carved panels, dated 1694 together with initials RIM, 95 x 50 x 78cm. £30-50
- 920 An 18th century elm six plank coffer - the hinged lid revealing a void interior, 120 x 43 x 49cm. £100-150
- 921 A 19th century gilt framed wall mirror - incorporating swags and a bracket about a rectangular shaped plate, 134 x 81cm. £40-60
- 922 An Edwardian mahogany shaving stand - the circular mirror above a circular top incorporating a hinged drawer, on a turned support and tripod base, 163 x 43cm. £30-50
- 923 An Edwardian mahogany tub chair - with a yoke shaped back rail and circular seat on a revolving quadraform base. £20-40
- 924 An Edwardian oak tub chair - with a shaped stick back and open arms on a revolving quadraform base. £20-40
- 925 A G-Plan teak Astro coffee table - of circular form with an inset glass top and fin supports, 84 x 47cm. £50-80
- 926 An Edwardian walnut open wall shelf - with an arrangement of three graduated shelves, 65 x 14 x 62cm. £30-50
- 927 A pair of 19th century green painted benches - each with rail backs and solid seats and chamfered splayed legs, 190cm long. £300-500
- 928 A 19th century Swedish / European painted bench - with a scumbled finish, the shaped back and arms with vase shaped splats above a box seat, 253cm. £300-400
- 929 An Edwardian mahogany open bookcase - rectangular with adjustable shelves on a plinth base, 132 x 33 x 113cm. £80-120
- 930 A 17th century style carved oak chest - with a rectangular hinged top above carved hunting/battle scenes, on spiral carved legs, 115 x 57 x 73cm. £300-400
- 931 A set of six beech dining chairs - the panel backs with a disc above rush seats on moulded square legs. (6) £80-120
- 932 NO LOT
- 933 A Louis XVI style upholstered bergere chair - upholstered with wicker panels and gold foliate fabric, raised on cabriole legs. £150-180

- 934 A pair of 19th century faux bamboo side chairs - with bobbin turned rail backs and rush seats on turned legs joined by peripheral stretchers. (2)  
£100-150
- 935 A Victorian mahogany and upholstered stool - with a rectangular tapestry seat on turned tapering legs, 60 x 51 x 47cm.  
£100-150
- 936 NO LOT
- 937 A Victorian mahogany X-framed stool - with white cotton button upholstered cushion, 62 x 50 x 49cm.  
£80-120
- 938 A white painted corner chair - with a stick back, slip-in seat and turned tapering legs joined by a X-form stretcher.  
£80-120
- 939 A Victorian mahogany hall chair - with a Gothic arched back and solid seat, on turned legs.  
£30-50

- 940 A 19th century Windsor chair - with arched stick back with yoke arms and pierced central splat above a contoured seat and turned legs joined by an H-shaped stretcher.  
£60-80
- 941 A 19th century Windsor chair - with hoop stick back and pierced splat above a contoured seat, on turned legs joined by a crinoline stretcher. £120-180
- 942 A Louis XVI style coffee table - the rectangular marble top and gilt rails with ceramic plaques and turned tapering fluted legs, 82 x 36 x 51cm.  
£20-30
- 943 A George III mahogany D-shaped table - on moulded square legs, 120 x 80 x 73cm. £20-30

**Bid Live Online at  
the-saleroom.com**

Bid online at our auctions through  
**the-saleroom.com**

**Or through Easy Live**

**easylive  
Auction  
.com**

**NEXT SPECIALISED 2 DAY SALE**

**Antiques, Fine Art & Collectables**

**Friday 27<sup>th</sup> & 28<sup>th</sup> November 2025**

*If you would like to consign or enquire about a free valuation please contact the Sale Room*

**T: 01872 270200**

**Email: [antiques@lodgeandthomas.co.uk](mailto:antiques@lodgeandthomas.co.uk)**

## COLLECTING YOUR PURCHASES

Collections from the Sale Room in the days after the sale:

- Monday to Friday 9.30am - 5pm no appointment necessary.
- Saturday directly following the sale 9.30am – 2pm no appointment necessary
- Collections can be from the following week – no appointment necessary.

Absentee bidders must make their own arrangements for the collection of lots purchased. Lodge & Thomas do operate in-house packaging and shipping services. If you wish to use this service, or arrange your own carrier collection, we can pack the items prior to collection using recycled materials.

NOTE: THIS SERVICE IS ONLY AVAILABLE FOR CERTAIN ITEMS.

Please contact the auctioneers for advice on the packing of your lots prior to bidding.

Lodge & Thomas reserve the right to refuse to pack and post any item (or items) which we deem to be unsuitable for delivery by selected couriers.

LODGE & THOMAS WILL NOT BE HELD RESPONSIBLE FOR ANY PACKAGED LOTS THAT MAY BE DAMAGED IN TRANSIT.

A list of couriers can be provided by phoning our office on 01872 270200.

**Please collect your items promptly as we do not have space to store them. If you are unable to collect or arrange shipping within the week following the sale, please contact us.**

## WOULD YOU LIKE TO SELL?

Contact **Guy** or **Mel** on **01872 270200**  
Email: [antiques@lodgeandthomas.co.uk](mailto:antiques@lodgeandthomas.co.uk)



Lot 48 - In the manner of Franz Bergman cold painted bronzes

Lot 222 - A late 18th century Meissen tea cup



Lot 50 - Michael Johnson Newlyn Copper Works



Lot 776 - Sandra BLOW Borderline Screen print



Lot 649 - A platinum set solitaire diamond ring

**Our next sale is 27 & 28<sup>th</sup> November**